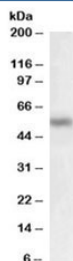


MMP12 Antibody (R35709)

Catalog No.	Formulation	Size
R35709-100UG	0.5 mg/ml in 1X TBS, pH7.3, with 0.5% BSA (US sourced) and 0.02% sodium azide	100 ug

[Bulk quote request](#)

Availability	1-3 business days
Species Reactivity	Human
Predicted Reactivity	Dog, Cow
Format	Antigen affinity purified
Host	Goat
Clonality	Polyclonal (goat origin)
Isotype	Goat Ig
Purity	Antigen affinity
Gene ID	4321
Applications	Western Blot : 0.3-1ug/ml ELISA (peptide) LOD : 1:4000
Limitations	This MMP12 antibody is available for research use only.



Western blot testing of human breast cancer lysate with MMP12 antibody at 0.5ug/ml.
Predicted molecular weight: ~55 kDa (pro form), ~45 kDa and ~22 kDa (active forms).

Description

Additional name(s) for this target protein: Matrix metalloproteinase 12

Application Notes

Optimal dilution of the MMP12 antibody should be determined by the researcher.

Immunogen

Amino acids RPKTSVNLISS were used as the immunogen for this MMP12 antibody.

Storage

Aliquot and store the MMP12 antibody at -20oC.