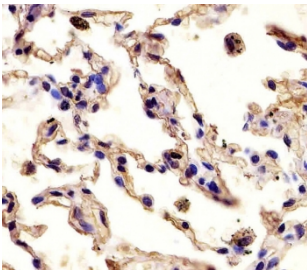


MMP12 Antibody (F54299)

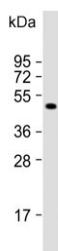
Catalog No.	Formulation	Size
F54299-0.4ML	In 1X PBS, pH 7.4, with 0.09% sodium azide	0.4 ml
F54299-0.08ML	In 1X PBS, pH 7.4, with 0.09% sodium azide	0.08 ml

[Bulk quote request](#)

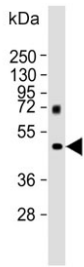
Availability	1-3 business days
Species Reactivity	Human, Mouse
Format	Purified
Host	Rabbit
Clonality	Polyclonal (rabbit origin)
Isotype	Rabbit Ig
Purity	Antigen affinity purified
UniProt	P39900
Applications	Western Blot : 1:500-1:2000 Immunohistochemistry (FFPE) : 1:25 Immunofluorescence : 1:25
Limitations	This MMP12 antibody is available for research use only.



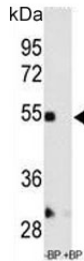
IHC testing of FFPE human lung tissue with MMP12 antibody. HIER: steam section in pH6 citrate buffer for 20 min and allow to cool prior to staining.



Western blot testing of human heart lysate with MMP12 antibody. Predicted molecular weight: ~55 kDa.



Western blot testing of human lung lysate with MMP12 antibody. Predicted molecular weight: ~55 kDa.



Western blot testing of mouse kidney lysate with MMP12 antibody in the absence and presence of blocking peptide. Predicted molecular weight: ~55 kDa.

Description

Proteins of the matrix metalloproteinase (MMP) family are involved in the breakdown of extracellular matrix in normal physiological processes, such as embryonic development, reproduction, and tissue remodeling, as well as in disease processes, such as arthritis and metastasis. Most MMPs are secreted as inactive propeptides which are activated when cleaved by extracellular proteinases. MMP12 may be involved in tissue injury and remodeling. This protein has significant elastolytic activity. MMP12 can accept large and small amino acids at the P1' site, but has a preference for leucine. Aromatic or hydrophobic residues are preferred at the P1 site, with small hydrophobic residues (preferably alanine) occupying P3. The protein is found in alveolar macrophages but not in peripheral blood monocytes. MMP12 can be induced by exposure to lipopolysaccharide, and is inhibited by dexamethasone.

Application Notes

The stated application concentrations are suggested starting points. Titration of the MMP12 antibody may be required due to differences in protocols and secondary/substrate sensitivity.

Immunogen

A portion of amino acids 391-420 from the human protein were used as the immunogen for the MMP12 antibody.

Storage

Aliquot the MMP12 antibody and store frozen at -20°C or colder. Avoid repeated freeze-thaw cycles.