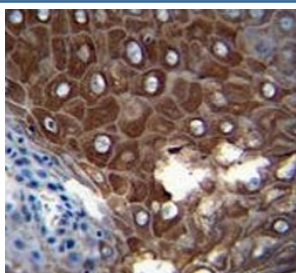


MMP1 Antibody (F41755)

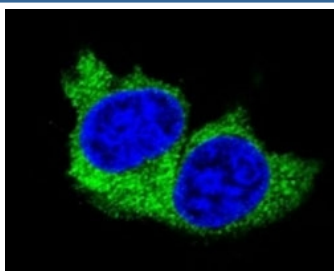
Catalog No.	Formulation	Size
F41755-0.4ML	In 1X PBS, pH 7.4, with 0.09% sodium azide	0.4 ml
F41755-0.08ML	In 1X PBS, pH 7.4, with 0.09% sodium azide	0.08 ml

[Bulk quote request](#)

Availability	1-3 business days
Species Reactivity	Human
Format	Antigen affinity purified
Clonality	Polyclonal (rabbit origin)
Isotype	Rabbit Ig
Purity	Antigen affinity
UniProt	P03956
Applications	Western Blot : 1:1000 IHC (Paraffin) : 1:50-1:100 Immunofluorescence : 1:10-1:50
Limitations	This MMP1 antibody is available for research use only.



MMP1 antibody immunohistochemistry analysis in formalin fixed and paraffin embedded human esophageal carcinoma



Confocal immunofluorescent analysis of MMP1 antibody with MDA-MB231 cells followed by Alexa Fluor 488-conjugated goat anti-rabbit IgG (green). DAPI was used as a nuclear counterstain (blue).

95
72
55
36
28
17

MMP1 antibody western blot analysis in MDA-MB231 lysate. Expected/observed molecular weight ~54 kDa.

Description

Proteins of the matrix metalloproteinase (MMP) family are involved in the breakdown of extracellular matrix in normal physiological processes, such as embryonic development, reproduction, and tissue remodeling, as well as in disease processes, such as arthritis and metastasis. Most MMP's are secreted as inactive proproteins which are activated when cleaved by extracellular proteinases. This gene encodes a secreted enzyme which breaks down the interstitial collagens, types I, II, and III. The gene is part of a cluster of MMP genes which localize to chromosome 11q22.3. Alternative splicing results in multiple transcript variants.

Application Notes

Titration of the MMP1 antibody may be required due to differences in protocols and secondary/substrate sensitivity.

Immunogen

A portion of amino acids 317-347 from the human protein was used as the immunogen for this MMP1 antibody.

Storage

Aliquot the MMP1 antibody and store frozen at -20oC or colder. Avoid repeated freeze-thaw cycles.