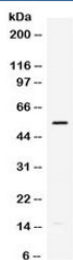


Mmp-12 Antibody (R32074)

Catalog No.	Formulation	Size
R32074	0.5mg/ml if reconstituted with 0.2ml sterile DI water	100 ug

[Bulk quote request](#)

Availability	1-3 business days
Species Reactivity	Mouse
Format	Antigen affinity purified
Host	Rabbit
Clonality	Polyclonal (rabbit origin)
Isotype	Rabbit IgG
Purity	Antigen affinity
Buffer	Lyophilized from 1X PBS with 2.5% BSA and 0.025% sodium azide
UniProt	P34960
Applications	Western Blot : 0.1-0.5ug/ml ELISA : 0.1-0.5ug/ml (mouse protein tested); request BSA-free format for coating
Limitations	This Mmp-12 antibody is available for research use only.



Western blot testing of mouse HEPA lysate with Mmp-12 antibody. Predicted molecular weight: ~55 kDa (pro form), ~45 kDa and ~22 kDa (active forms).

Description

Matrix metalloproteinase-12 (MMP12), also known as MME or ME, is an enzyme that in humans is encoded by the MMP12 gene. The gene is part of a cluster of MMP genes which localize to chromosome 11q22.2. It is thought that the protein encoded by this gene is cleaved at both ends to yield the active enzyme, but this processing has not been fully described. The enzyme degrades soluble and insoluble elastin. It may play a role in aneurysm formation and studies in mice suggest a role in the development of emphysema. This gene may involved in tissue injury and remodeling.

Application Notes

Optimal dilution of the Mmp-12 antibody should be determined by the researcher.

Immunogen

Amino acids KIDAVLYFKRHYYIFQGAYQLEYDPLFRRVTKTLK of mouse Mmp-12 were used as the immunogen for the Mmp-12 antibody.

Storage

After reconstitution, the Mmp-12 antibody can be stored for up to one month at 4oC. For long-term, aliquot and store at -20oC. Avoid repeated freezing and thawing.