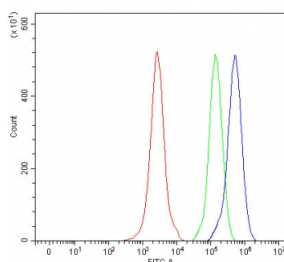


## MMACHC Antibody / CbIC (RQ8304)

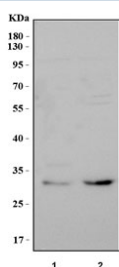
Catalog No.	Formulation	Size
RQ8304	0.5mg/ml if reconstituted with 0.2ml sterile DI water	100 ug

**Bulk quote request**

<b>Availability</b>	1-3 business days
<b>Species Reactivity</b>	Human
<b>Format</b>	Antigen affinity purified
<b>Clonality</b>	Polyclonal (rabbit origin)
<b>Isotype</b>	Rabbit IgG
<b>Purity</b>	Antigen affinity purified
<b>Buffer</b>	Lyophilized from 1X PBS with 2% Trehalose
<b>UniProt</b>	Q9Y4U1
<b>Applications</b>	Western Blot : 0.5-1ug/ml Flow Cytometry : 1-3ug/million cells ELISA : 0.1-0.5ug/ml
<b>Limitations</b>	This MMACHC antibody is available for research use only.



Flow cytometry testing of fixed and permeabilized human JK cells with MMACHC antibody at 1ug/million cells (blocked with goat sera); Red=cells alone, Green=isotype control, Blue= MMACHC antibody.



Western blot testing of human 1) HepG2 and 2) K562 cell lysate with MMACHC antibody. Predicted molecular weight ~32 kDa.

## Description

Methylmalonic aciduria and homocystinuria type C protein (MMACHC) is a protein that in humans is encoded by the MMACHC gene. The exact function of the protein encoded by this gene is not known, however, its C-terminal region shows similarity to TonB, a bacterial protein involved in energy transduction for cobalamin (vitamin B12) uptake. Hence, it is postulated that this protein may have a role in the binding and intracellular trafficking of cobalamin. Mutations in this gene are associated with methylmalonic aciduria and homocystinuria type cblC.

## Application Notes

Optimal dilution of the MMACHC antibody should be determined by the researcher.

## Immunogen

An E.coli-derived human recombinant protein (M1-K242) was used as the immunogen for the MMACHC antibody.

## Storage

After reconstitution, the MMACHC antibody can be stored for up to one month at 4oC. For long-term, aliquot and store at -20oC. Avoid repeated freezing and thawing.