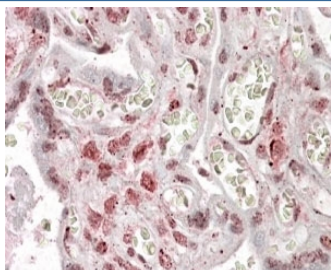


## MLX Antibody (R35310)

Catalog No.	Formulation	Size
R35310-100UG	0.5 mg/ml in 1X TBS, pH7.3, with 0.5% BSA (US sourced) and 0.02% sodium azide	100 ug

[Bulk quote request](#)

Availability	1-3 business days
Species Reactivity	Human
Predicted Reactivity	Cow, Dog, Mouse, Rat
Format	Antigen affinity purified
Host	Goat
Clonality	Polyclonal (goat origin)
Isotype	Goat Ig
Purity	Antigen affinity
Gene ID	6945
Applications	Immunohistochemistry (FFPE) : 2.5-5ug/ml ELISA (peptide) LOD : 1:128000
Limitations	This MLX antibody is available for research use only.



IHC testing of FFPE human placenta with MLX antibody at 4ug/ml. HIER: steamed with pH6 citrate buffer, AP-staining.

### Description

Additional name(s) for this target protein: MAX-like protein X

### Application Notes

Optimal dilution of the MLX antibody should be determined by the researcher.

## Immunogen

Amino acids QIVKAHQDNPHEGED were used as the immunogen for this MLX antibody.

## Storage

Aliquot and store the MLX antibody at -20oC.