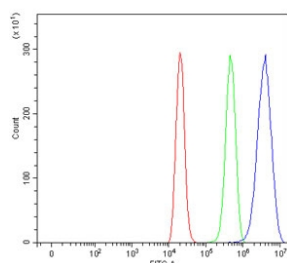


MLX Antibody / Max-like protein X (RQ6889)

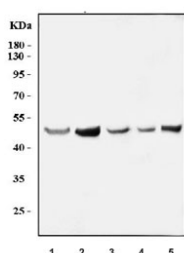
Catalog No.	Formulation	Size
RQ6889	0.5mg/ml if reconstituted with 0.2ml sterile DI water	100 ug

Bulk quote request

Availability	1-3 business days
Species Reactivity	Human, Mouse, Monkey
Format	Antigen affinity purified
Host	Rabbit
Clonality	Polyclonal (rabbit origin)
Isotype	Rabbit IgG
Purity	Antigen affinity purified
Buffer	Lyophilized from 1X PBS with 2% Trehalose
UniProt	Q9UH92
Applications	Western Blot : 1-2ug/ml Flow Cytometry : 1-3ug/million cells
Limitations	This MLX antibody is available for research use only.



Flow cytometry testing of human ThP-1 cells with MLX antibody at 1ug/million cells (blocked with goat sera); Red=cells alone, Green=isotype control, Blue= MLX antibody.



Western blot testing of 1) human HepG2, 2) human MCF7, 3) human SiHa, 4) monkey COS-7 and 5) mouse HEPA1-6 cell lysate with MLX antibody. Predicted molecular weight ~33 kDa, commonly observed at 30-50 kDa.

Description

Max-like protein X is a protein that in humans is encoded by the MLX gene. The product of this gene belongs to the family of basic helix-loop-helix leucine zipper (bHLH-Zip) transcription factors. These factors form heterodimers with Mad proteins and play a role in proliferation, determination and differentiation. This gene product may act to diversify Mad family function by its restricted association with a subset of the Mad family of transcriptional repressors, namely, Mad1 and Mad4. Alternatively spliced transcript variants encoding different isoforms have been identified for this gene.

Application Notes

Optimal dilution of the MLX antibody should be determined by the researcher.

Immunogen

Amino acids FQELSACVFSWIEEHCKPQTLREIVIGVLHQLKNQLY from the human protein were used as the immunogen for the MLX antibody.

Storage

After reconstitution, the MLX antibody can be stored for up to one month at 4°C. For long-term, aliquot and store at -20°C. Avoid repeated freezing and thawing.