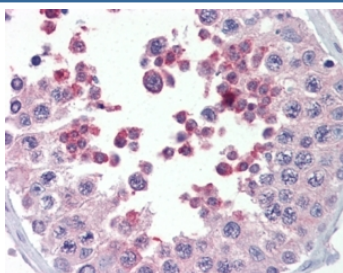


## MLL4 Antibody / KMT2B (R33282)

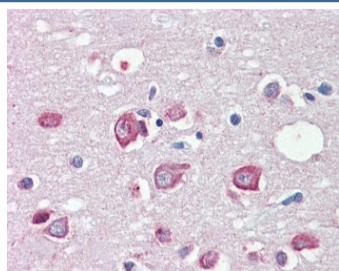
Catalog No.	Formulation	Size
R33282-100UG	0.5 mg/ml in 1X TBS, pH7.3, with 0.5% BSA (US sourced) and 0.02% sodium azide	100 ug

[Bulk quote request](#)

Availability	1-3 business days
Species Reactivity	Human
Predicted Reactivity	Mouse, Rat, Dog, Pig
Format	Antigen affinity purified
Clonality	Polyclonal (goat origin)
Isotype	Goat Ig
Purity	Antigen affinity
Gene ID	9757
Applications	Immunohistochemistry (FFPE) : 5-10ug/ml ELISA (peptide) LOD : 1:128000
Limitations	This MLL4 antibody is available for research use only.



IHC testing of FFPE human testis with MLL4 antibody at 5ug/ml. HIER: steamed with pH6 citrate buffer, AP-staining.



IHC testing of FFPE human brain (cortex) with MLL4 antibody at 5ug/ml. HIER: steamed with pH6 citrate buffer, AP-staining.

## Description

Additional name(s) for this target protein: Myeloid/lymphoid or mixed-lineage leukemia 4; Histone-lysine N-methyltransferase 2B

## Application Notes

Optimal dilution of the MLL4 antibody should be determined by the researcher.

## Immunogen

Amino acids CNCGAKRCRRFLN were used as the immunogen for this MLL4 antibody.

## Storage

Aliquot and store the MLL4 antibody at -20oC.