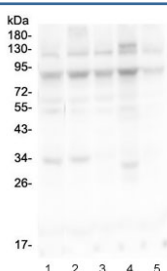


## MLH1 Antibody (R32088)

Catalog No.	Formulation	Size
R32088	0.5mg/ml if reconstituted with 0.2ml sterile DI water	100 ug

**Bulk quote request**

<b>Availability</b>	1-3 business days
<b>Species Reactivity</b>	Human
<b>Format</b>	Antigen affinity purified
<b>Host</b>	Rabbit
<b>Clonality</b>	Polyclonal (rabbit origin)
<b>Isotype</b>	Rabbit IgG
<b>Purity</b>	Antigen affinity
<b>Buffer</b>	Lyophilized from 1X PBS with 2.5% BSA and 0.025% sodium azide
<b>UniProt</b>	P40692
<b>Applications</b>	Western Blot : 0.1-0.5ug/ml
<b>Limitations</b>	This MLH1 antibody is available for research use only.



Western blot testing of human 1) HEK293, 2) HeLa, 3) COLO320, 4) T-47D and 5) A549 cell lysate with MLH1 antibody. Predicted molecular weight: 85/58/74 kDa (isoforms 1/2/3).

## Description

MutL homolog 1, colon cancer, nonpolyposis type 2 (E. coli) is a protein that in humans is encoded by the MLH1 gene located on Chromosome 3. This gene was identified as a locus frequently mutated in hereditary nonpolyposis colon cancer (HNPCC). It is a human homolog of the E. coli DNA mismatch repair gene mutL, consistent with the characteristic alterations in microsatellite sequences (RER+phenotype) found in HNPCC. Alternative splicing results in multiple transcript variants encoding distinct isoforms. Additional transcript variants have been described, but their full-length natures have not been determined.

## Application Notes

Optimal dilution of the MLH1 antibody should be determined by the researcher.

## Immunogen

Amino acids KALRSHILPPKHFTEDGNILQLANLPDLYKVFERC of human MLH1 were used as the immunogen for the MLH1 antibody.

## Storage

After reconstitution, the MLH1 antibody can be stored for up to one month at 4oC. For long-term, aliquot and store at -20oC. Avoid repeated freezing and thawing.