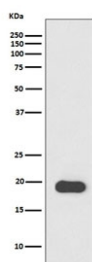


MLC2 Antibody / Myosin Light Chain 2 / MYL2 [clone FHO-13] (RQ5348)

Catalog No.	Formulation	Size
RQ5348	Antibody in PBS with 0.02% sodium azide, 50% glycerol and 0.4-0.5mg/ml BSA	100 ul

[Bulk quote request](#)

Availability	1-2 weeks
Species Reactivity	Mouse
Format	Purified
Clonality	Rabbit Monoclonal
Isotype	Rabbit IgG
Clone Name	FHO-13
Purity	Affinity purified
UniProt	P10916
Applications	Western Blot : 1:1000-1:5000
Limitations	This MLC2 antibody is available for research use only.



Western blot testing pf mouse heart lysate with MLC2 antibody. Predicted molecular weight ~19 kDa.

Description

The MYL2 gene encodes the regulatory light chain associated with cardiac myosin beta (or slow) heavy chain. Ca²⁺ triggers the phosphorylation of regulatory light chain that in turn triggers contraction. Mutations in this gene are associated with mid-left ventricular chamber type hypertrophic cardiomyopathy.

Application Notes

Optimal dilution of the MLC2 antibody should be determined by the researcher.

Immunogen

A synthetic peptide specific to human Myosin Light Chain 2 / MYL2 was used as the immunogen for the MLC2 antibody.

Storage

Store the MLC2 antibody at -20oC.