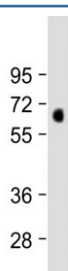


MKS1 Antibody / Meckel syndrome type 1 protein (N-Terminal Region) (F54182)

Catalog No.	Formulation	Size
F54182-0.2ML	In 1X PBS, pH 7.4, with 0.09% sodium azide	0.2 ml
F54182-0.05ML	In 1X PBS, pH 7.4, with 0.09% sodium azide	0.05 ml

[Bulk quote request](#)

Availability	1-3 business days
Species Reactivity	Human
Format	Antigen affinity purified
Host	Rabbit
Clonality	Polyclonal (rabbit origin)
Isotype	Rabbit Ig
Purity	Antigen affinity
UniProt	Q9NXB0
Applications	Western Blot : 1:1000-1:2000
Limitations	This MKS1 antibody is available for research use only.



Western blot testing of human lung tissue lysate with MKS1 antibody at 1:2000.
Predicted molecular weight ~65 kDa.

Description

Component of the tectonic-like complex, a complex localized at the transition zone of primary cilia and acting as a barrier that prevents diffusion of transmembrane proteins between the cilia and plasma membranes. Involved in centrosome migration to the apical cell surface during early ciliogenesis. Required for ciliary structure and function, including a role in regulating length and appropriate number through modulating centrosome duplication. Required for cell branching morphology.

Application Notes

The stated application concentrations are suggested starting points. Titration of the MKS1 antibody may be required due to differences in protocols and secondary/substrate sensitivity.

Immunogen

A portion of amino acids 38-72 from human MKS1 was used as the immunogen for the MKS1 antibody.

Storage

Aliquot the MKS1 antibody and store frozen at -20oC or colder. Avoid repeated freeze-thaw cycles.