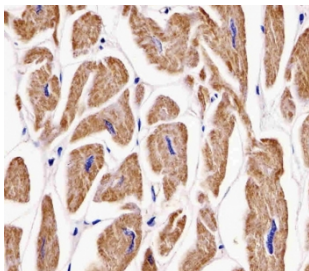


MKRN2 Antibody [clone 1556CT631.230.55.49] (F54488)

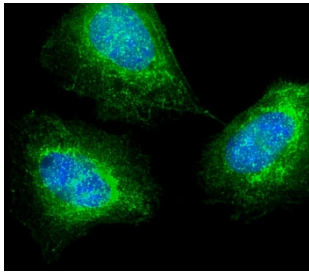
Catalog No.	Formulation	Size
F54488-0.2ML	In 1X PBS, pH 7.4, with 0.09% sodium azide	0.2 ml
F54488-0.05ML	In 1X PBS, pH 7.4, with 0.09% sodium azide	0.05 ml

[Bulk quote request](#)

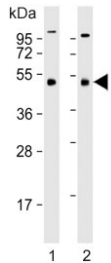
Availability	1-3 business days
Species Reactivity	Human
Format	Purified
Host	Mouse
Clonality	Monoclonal (mouse origin)
Isotype	IgG1, kappa
Clone Name	1556CT631.230.55.49
Purity	Protein G affinity
UniProt	Q9H000
Applications	Western Blot : 1:500-1:2000 Flow Cytometry : 1:25 (1x10e6 cells) Immunohistochemistry (FFPE) : 1:25 Immunofluorescence : 1:25
Limitations	This MKRN2 antibody is available for research use only.



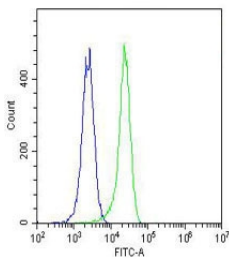
IHC testing of FFPE human heart tissue with MKRN2 antibody. HIER: steam section in pH6 citrate buffer for 20 min and allow to cool prior to staining.



Immunofluorescent staining of fixed and permeabilized human U-2 OS cells with MKRN2 antibody (green) and DAPI nuclear stain (blue).



Western blot testing of human 1) Jurkat and 2) K562 cell lysate with MKRN2 antibody. Predicted molecular weight ~47 kDa.



Flow cytometry testing of fixed and permeabilized human K562 cells with MKRN2 antibody; Blue=isotype control, Green= MKRN2 antibody.

Description

E3 ubiquitin ligase catalyzing the covalent attachment of ubiquitin moieties onto substrate proteins.

Application Notes

The stated application concentrations are suggested starting points. Titration of the MKRN2 antibody may be required due to differences in protocols and secondary/substrate sensitivity.

Immunogen

Recombinant human protein was used as the immunogen for the MKRN2 antibody.

Storage

Aliquot the MKRN2 antibody and store frozen at -20°C or colder. Avoid repeated freeze-thaw cycles.