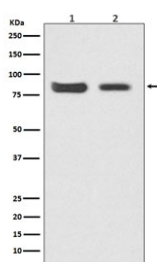


Mitofusin 2 Antibody / MFN2 [clone AOCA-13] (RQ4802)

Catalog No.	Formulation	Size
RQ4802	Antibody in PBS with 0.02% sodium azide, 50% glycerol and 0.4-0.5mg/ml BSA	100 ul

[Bulk quote request](#)

Availability	1-2 weeks
Species Reactivity	Human, Mouse
Format	Purified
Clonality	Rabbit Monoclonal
Isotype	Rabbit IgG
Clone Name	AOCA-13
Purity	Affinity purified
UniProt	O95140
Applications	Western Blot : 1:500-1:2000
Limitations	This Mitofusin 2 antibody is available for research use only.



Western blot testing of 1) human HeLa and 2) mouse kidney lysate with Mitofusin 2 antibody. Predicted molecular weight ~86 kDa.

Description

Mitofusin 2 is a mitochondrial outer membrane GTPase that mediates mitochondrial clustering and fusion. Mitochondria are highly dynamic organelles, and their morphology is determined by the equilibrium between mitochondrial fusion and fission events. Overexpression induces the formation of mitochondrial networks. Membrane clustering requires GTPase activity and may involve a major rearrangement of the coiled coil domains (Probable). Plays a central role in mitochondrial metabolism and may be associated with obesity and/or apoptosis processes. Plays an important role in the regulation of vascular smooth muscle cell proliferation. Involved in the clearance of damaged mitochondria via selective autophagy (mitophagy). Is required for PRKN recruitment to dysfunctional mitochondria. [UniProt]

Application Notes

Optimal dilution of the Mitofusin 2 antibody should be determined by the researcher.

Immunogen

A synthetic peptide specific to human Mitofusin 2 / MFN2 was used as the immunogen for the Mitofusin 2 antibody.

Storage

Store the Mitofusin 2 antibody at -20oC.