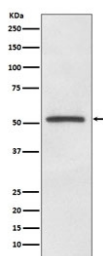


## MITF Antibody [clone AOED-13] (RQ4770)

Catalog No.	Formulation	Size
RQ4770	Antibody in PBS with 0.02% sodium azide, 50% glycerol and 0.4-0.5mg/ml BSA	100 ul

[Bulk quote request](#)

Availability	1-2 weeks
Species Reactivity	Human
Format	Purified
Host	Rabbit
Clonality	Rabbit Monoclonal
Isotype	Rabbit IgG
Clone Name	AOED-13
Purity	Affinity purified
UniProt	O75030
Applications	Western Blot : 1:500-1:2000
Limitations	This MITF antibody is available for research use only.



Western blot testing of human A375 cell lysate with MITF antibody. Predicted molecular weight: 55-60 kDa.

## Description

'Microphthalmia-associated transcription factor' (MITF) is a transcription factor that regulates the expression of genes with essential roles in cell differentiation, proliferation and survival. [UniProt]

## Application Notes

Optimal dilution of the MITF antibody should be determined by the researcher.

## Immunogen

A synthetic peptide specific to human MITF was used as the immunogen for the MITF antibody.

## Storage

Store the MITF antibody at -20°C.