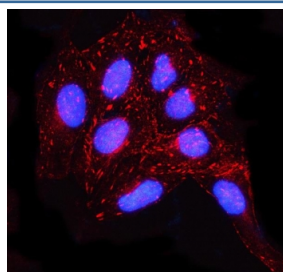


MISP Antibody / Mitotic interactor and substrate of PLK1 (RQ8364)

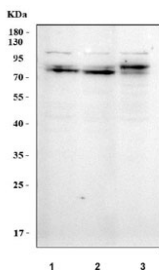
Catalog No.	Formulation	Size
RQ8364	0.5mg/ml if reconstituted with 0.2ml sterile DI water	100 ug

Bulk quote request

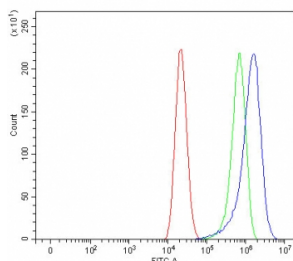
Availability	1-3 business days
Species Reactivity	Human
Format	Antigen affinity purified
Clonality	Polyclonal (rabbit origin)
Isotype	Rabbit IgG
Purity	Antigen affinity purified
Buffer	Lyophilized from 1X PBS with 2% Trehalose
UniProt	Q8IVT2
Localization	Cytoplasm, cytoskeleton, cell junctions
Applications	Western Blot : 0.5-1ug/ml Immunofluorescence : 5ug/ml Flow Cytometry : 1-3ug/million cells ELISA : 0.1-0.5ug/ml
Limitations	This MISP antibody is available for research use only.



Immunofluorescent staining of FFPE human U-2 OS cells with MISP antibody (red) and DAPI nuclear stain (blue). HIER: steam section in pH6 citrate buffer for 20 min.



Western blot testing of human 1) MCF7, 2) HepG2 and 3) A549 cell lysate with MISP antibody. Predicted molecular weight ~75 kDa.



Flow cytometry testing of fixed and permeabilized human Caco-2 cells with MISP antibody at 1ug/million cells (blocked with goat sera); Red=cells alone, Green=isotype control, Blue= MISP antibody.

Description

The protein encoded by this gene is an actin-bundling protein involved in determining cell morphology and mitotic progression. The encoded protein is required for the proper positioning of the mitotic spindle. Two transcript variants, one protein-coding and the other non-protein coding, have been found for this gene.

Application Notes

Optimal dilution of the MISP antibody should be determined by the researcher.

Immunogen

An E.coli-derived human recombinant protein (M1-R632) was used as the immunogen for the MISP antibody.

Storage

After reconstitution, the MISP antibody can be stored for up to one month at 4oC. For long-term, aliquot and store at -20oC. Avoid repeated freezing and thawing.