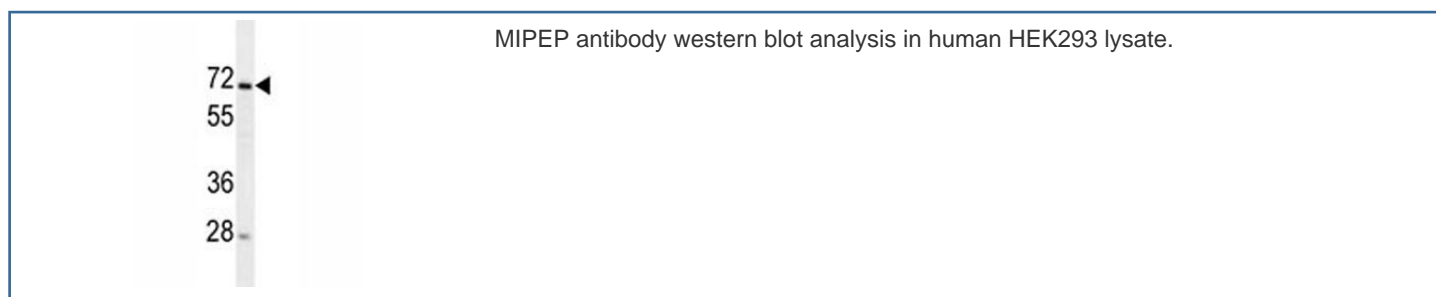


## MIPEP Antibody / Mitochondrial intermediate peptidase [clone 166CT22.3.7] (F40233)

Catalog No.	Formulation	Size
F40233-0.4ML	In 1X PBS, pH 7.4, with 0.09% sodium azide	0.4 ml
F40233-0.08ML	In 1X PBS, pH 7.4, with 0.09% sodium azide	0.08 ml

[Bulk quote request](#)

<b>Availability</b>	1-3 business days
<b>Species Reactivity</b>	Human
<b>Format</b>	Purified
<b>Clonality</b>	Monoclonal (mouse origin)
<b>Isotype</b>	Mouse IgG1, k
<b>Clone Name</b>	166CT22.3.7
<b>Purity</b>	Purified
<b>UniProt</b>	Q99797
<b>Applications</b>	Western Blot : 1:100-1:1000
<b>Limitations</b>	This MIPEP antibody is available for research use only.



### Description

Cleaves proteins, imported into the mitochondrion, to their mature size.

### Application Notes

Titration of the MIPEP antibody may be required due to differences in protocols and secondary/substrate sensitivity.

## **Immunogen**

This MIPEP antibody was produced from a mouse immunized with MIPEP recombinant protein.

## **Storage**

Aliquot the MIPEP antibody and store frozen at -20oC or colder. Avoid repeated freeze-thaw cycles.