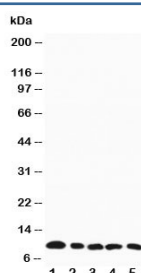


## MIP-1 beta Antibody (R30450)

Catalog No.	Formulation	Size
R30450	0.5mg/ml if reconstituted with 0.2ml sterile DI water	100 ug

**Bulk quote request**

<b>Availability</b>	1-3 business days
<b>Species Reactivity</b>	Mouse
<b>Format</b>	Antigen affinity purified
<b>Host</b>	Rabbit
<b>Clonality</b>	Polyclonal (rabbit origin)
<b>Isotype</b>	Rabbit IgG
<b>Purity</b>	Antigen affinity
<b>Buffer</b>	Lyophilized from 1X PBS with 2.5% BSA and 0.025% sodium azide/thimerosal
<b>UniProt</b>	P14097
<b>Applications</b>	Western Blot : 0.5-1ug/ml
<b>Limitations</b>	This MIP-1 beta antibody is available for research use only.



Western blot testing of MIP-1 beta antibody and mouse samples: 1. spleen, 2. heart, 3. lung, 4. kidney, 5. skeletal muscle tissue lysate. Expected molecular weight: 10/8kDa (precursor/mature).

## Description

Chemokine (C-C motif) ligand 4, also known as CCL4 and MIP-1 beta, is a protein which in humans is encoded by the CCL4 gene. It is a CC chemokine with specificity for CCR5 receptors. It is a chemoattractant for natural killer cells, monocytes and a variety of other immune cells. MIP-1 beta is a major HIV-suppressive factor produced by CD8+ T cells.

## Application Notes

The stated application concentrations are suggested starting amounts. Titration of the MIP-1 beta antibody may be

required due to differences in protocols and secondary/substrate sensitivity.

## Immunogen

Amino acids 74-88 (CANPSEPWVTEYMSD-mouse) were used as the immunogen for this MIP-1 beta antibody.

## Storage

After reconstitution, the MIP-1 beta antibody can be stored for up to one month at 4°C. For long-term, aliquot and store at -20°C. Avoid repeated freezing and thawing.