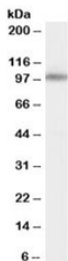


## MINT1 Antibody / APBA1 (R33717)

| Catalog No.  | Formulation   | Size   |
|--------------|---|--------|
| R33717-100UG | 0.5 mg/ml in 1X TBS, pH7.3, with 0.5% BSA (US sourced) and 0.02% sodium azide | 100 ug |

[Bulk quote request](#)

|                             |  |
|-----------------------------|--|
| <b>Availability</b>         | 1-3 business days  |
| <b>Species Reactivity</b>   | Human  |
| <b>Predicted Reactivity</b> | Mouse, Rat   |
| <b>Format</b>               | Antigen affinity purified                                    |
| <b>Host</b>                 | Goat   |
| <b>Clonality</b>            | Polyclonal (goat origin)                                     |
| <b>Isotype</b>              | Goat Ig  |
| <b>Purity</b>               | Antigen affinity   |
| <b>Gene ID</b>              | 320  |
| <b>Applications</b>         | Western Blot : 0.1-0.3ug/ml<br>ELISA (peptide) LOD : 1:16000 |
| <b>Limitations</b>          | This MINT1 antibody is available for research use only.      |



Western blot testing of human cerebellum lysate with MINT1 antibody at 0.1ug/ml.  
Predicted molecular weight: ~93kDa.

### Description

Additional name(s) for this target protein: Amyloid beta (A4) precursor protein-binding, family A, member 1; APBA1

### Application Notes

Optimal dilution of the MINT1 antibody should be determined by the researcher.

## **Immunogen**

Amino acids EASHPSQDGKRQYK were used as the immunogen for this MINT1 antibody.

## **Storage**

Aliquot and store the MINT1 antibody at -20oC.