

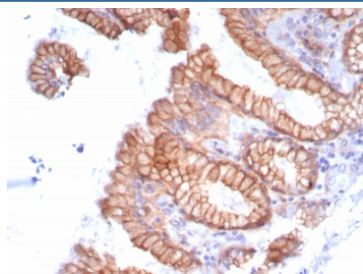
Migfilin-1 Antibody / FBLIM1 / Filamin B [clone FBLIM1/8189R] (V4348)

Catalog No.	Formulation	Size
V4348-100UG	0.2 mg/ml in 1X PBS with 0.1 mg/ml BSA (US sourced), 0.05% sodium azide	100 ug
V4348-20UG	0.2 mg/ml in 1X PBS with 0.1 mg/ml BSA (US sourced), 0.05% sodium azide	20 ug
V4348SAF-100UG	1 mg/ml in 1X PBS; BSA free, sodium azide free	100 ug

Recombinant **RABBIT MONOCLONAL**

[Bulk quote request](#)

Availability	1-3 business days
Species Reactivity	Human
Format	Purified
Host	Rabbit
Clonality	Recombinant Rabbit Monoclonal
Isotype	Rabbit IgG, kappa
Clone Name	FBLIM1/8189R
Purity	Protein A/G affinity
UniProt	Q8WUP2
Localization	Cytoplasm
Applications	Immunohistochemistry (FFPE) : 1-2ug/ml for 30 minutes at RT
Limitations	This Migfilin-1 antibody is available for research use only.



IHC staining of FFPE human stomach tissue with Migfilin-1 antibody (clone FBLIM1/8189R). HIER: boil tissue sections in pH 9 10mM Tris with 1mM EDTA for 20 min and allow to cool before testing.

Description

FBLIM1 (also known as Filamin B, MIG-2 Interacting Protein and Migfilin) is an important component of cell-extracellular matrix adhesion. Kindlin-2 binds integrins and is involved in ECM adhesion, actin assembly and cell shape modulation.

Application Notes

Optimal dilution of the Migfilin-1 antibody should be determined by the researcher.

Immunogen

Recombinant full-length human protein was used as the immunogen for the Migfilin-1 antibody.

Storage

Aliquot the Migfilin-1 antibody and store frozen at -20oC or colder. Avoid repeated freeze-thaw cycles.