

MIF Antibody / Macrophage migration inhibitory factor (R34757)

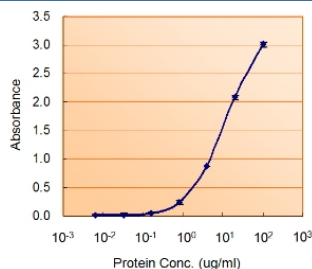
Catalog No.	Formulation	Size
R34757-100UG	0.5 mg/ml in 1X TBS, pH7.3, with 0.5% BSA (US sourced) and 0.02% sodium azide	100 ug

[Bulk quote request](#)

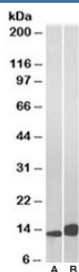
Availability	1-3 business days
Species Reactivity	Human
Predicted Reactivity	Mouse, Rat
Format	Antigen affinity purified
Host	Goat
Clonality	Polyclonal (goat origin)
Isotype	Goat Ig
Purity	Antigen affinity
Gene ID	4282
Localization	Secreted, cytoplasmic
Applications	Western Blot : 0.01-0.03ug/ml IHC (FFPE) : 5ug/ml Enzyme ImmunoAssay : used as capture for recombinant protein (coat at 1-3ug/ml) ELISA (peptide) LOD : 1:128000
Limitations	This MIF antibody is available for research use only.



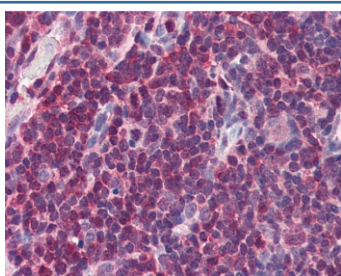
Western blot testing of human thymus lysate with MIF antibody at 0.01ug/ml. Predicted molecular weight ~13 kDa.



Sandwich ELISA using the MIF antibody at 1.5ug/ml as the detect.



Western blot of Daudi (A) and Jurkat (B) lysate with MIF antibody at 0.01ug/ml.
Predicted molecular weight ~13 kDa.



IHC testing of FFPE human thymus tissue with MIF antibody at 5ug/ml. Required HIER: steamed antigen retrieval with pH6 citrate buffer; AP-staining.

Description

Additional name(s) for this target protein: Macrophage migration inhibitory factor

Application Notes

Optimal dilution of the MIF antibody should be determined by the researcher.

Immunogen

Amino acids NAANVGWNNSTFA were used as the immunogen for this MIF antibody.

Storage

Aliquot and store the MIF antibody at -20oC.