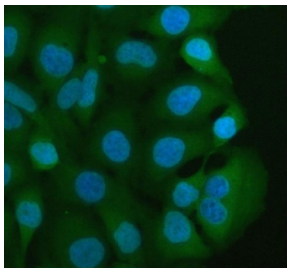


MIF Antibody / Macrophage migration inhibitory factor (R31687)

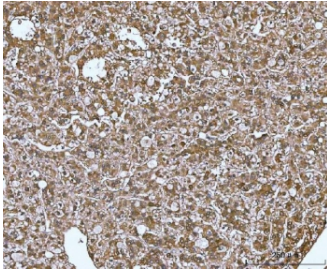
Catalog No.	Formulation	Size
R31687	0.5mg/ml if reconstituted with 0.2ml sterile DI water	100 ug

Bulk quote request

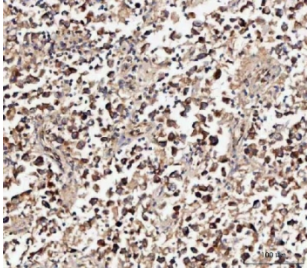
Availability	1-3 business days
Species Reactivity	Human
Format	Antigen affinity purified
Host	Rabbit
Clonality	Polyclonal (rabbit origin)
Isotype	Rabbit IgG
Purity	Antigen affinity
Buffer	Lyophilized from 1X PBS with 2% Trehalose
UniProt	P14174
Gene ID	4282
Localization	Cytoplasmic, secreted
Applications	Western Blot : 0.5-1ug/ml Immunohistochemistry (FFPE) : 2-5ug/ml Immunofluorescence : 5ug/ml Flow Cytometry : 1-3ug/million cells
Limitations	This MIF antibody is available for research use only.



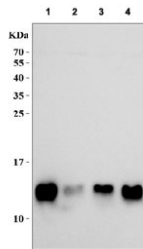
Immunofluorescent staining of FFPE human HeLa cells with MIF antibody (green) and DAPI nuclear stain (blue). HIER: steam section in pH6 citrate buffer for 20 min.



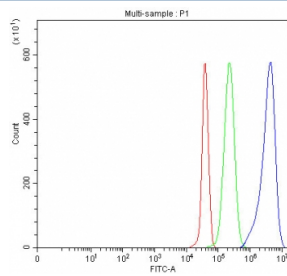
IHC staining of FFPE human liver cancer tissue with MIF antibody. HIER: boil tissue sections in pH8 EDTA for 20 min and allow to cool before testing.



IHC staining of FFPE human lung cancer tissue with MIF antibody. HIER: boil tissue sections in pH8 EDTA for 20 min and allow to cool before testing.



Western blot testing of human 1) Jurkat, 2) K562, 3) HeLa and 4) HepG2 cell lysat with MIF antibody. Predicted molecular weight ~13 kDa.



Flow cytometry testing of fixed and permeabilized human Jurkat cells with MIF antibody at 1ug/million cells (blocked with goat sera); Red=cells alone, Green=isotype control, Blue= MIF antibody.

Description

Macrophage migration inhibitory factor (MMIF), also known as GIF, is a protein that in humans is encoded by the MIF gene. It is a cytokine released by T-lymphocytes, macrophages, and the pituitary gland that serves to integrate peripheral and central inflammatory responses. The gene has 3 exons separated by introns of only 189 and 95 bp, and covers less than 1 kb. MIF plays a critical role in inflammatory diseases and atherogenesis. It is also involved in cell-mediated immunity and immunoregulation. MIF plays a role in the regulation of macrophage function in host defense through the suppression of anti-inflammatory effects of glucocorticoids.

Application Notes

Variations in secondary/substrate sensitivities and test protocols may require the MIF antibody to be titrated for optimal performance.

Immunogen

Human partial recombinant protein (AA 2-115) was used as the immunogen for this MIF antibody.

Storage

The lyophilized MIF antibody can be stored at 4oC to -20oC. After reconstitution, aliquot and store at -20oC. Avoid repeated freeze/thaws.