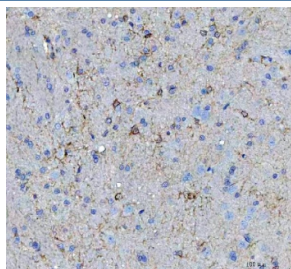


MIF Antibody / Macrophage migration inhibitory factor (R30231)

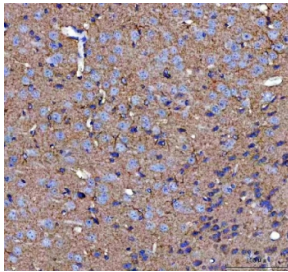
Catalog No.	Formulation	Size
R30231	0.5mg/ml if reconstituted with 0.2ml sterile DI water	100 ug

Bulk quote request

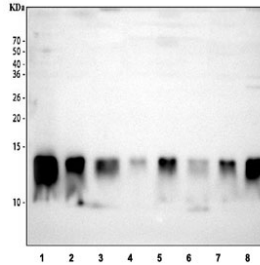
Availability	1-3 business days
Species Reactivity	Human, Mouse, Rat
Format	Antigen affinity purified
Host	Rabbit
Clonality	Polyclonal (rabbit origin)
Isotype	Rabbit IgG
Purity	Antigen affinity
Buffer	Lyophilized from 1X PBS with 2% Trehalose
UniProt	P14174
Localization	Cytoplasmic, secreted
Applications	Western Blot : 1-2ug/ml Immunohistochemistry (FFPE) : 2-5ug/ml Flow Cytometry : 1-3ug/million cells
Limitations	This MIF antibody is available for research use only.



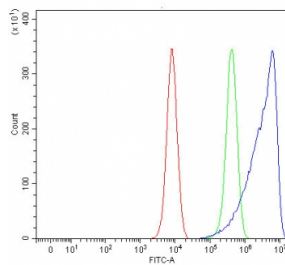
IHC staining of FFPE rat brain tissue with MIF antibody. HIER: boil tissue sections in pH8 EDTA buffer for 20 min and allow to cool before testing.



IHC staining of FFPE mouse brain tissue with MIF antibody. HIER: boil tissue sections in pH8 EDTA buffer for 20 min and allow to cool before testing.



Western blot testing 1) human Jurkat, 2) human 293T, 3) rat kidney, 4) rat NRK, 5) rat PC-12, 6) mouse kidney, 7) mouse HBZY-1 and 8) mouse RAW264.7 cell lysate with MIF antibody. Predicted molecular weight ~13 kDa.



Flow cytometry testing of human K562 cells with MIF antibody at 1ug/million cells (blocked with goat sera); Red=cells alone, Green=isotype control, Blue= MIF antibody.

Description

Macrophage migration inhibitory factor, MIF, is a cytokine released by T-lymphocytes, macrophages, and the pituitary gland that serves to integrate peripheral and central inflammatory responses. MIF gene has 3 exons separated by introns of only 189 and 95 bp, and covers less than 1 kb. Localization of the human gene for macrophage migration inhibitory factor (MIF) to chromosome 22q11.2 MIF plays a critical role in inflammatory diseases and atherogenesis.

Application Notes

The stated application concentrations are suggested starting amounts. Titration of the MIF antibody may be required due to differences in protocols and secondary/substrate sensitivity.

Immunogen

An amino acid sequence from the C-terminus of human MIF (NYDDMNAANVGWNNSTFA) was used as the immunogen for this MIF antibody.

Storage

After reconstitution, the MIF antibody can be stored for up to one month at 4°C. For long-term, aliquot and store at -20°C. Avoid repeated freezing and thawing.

