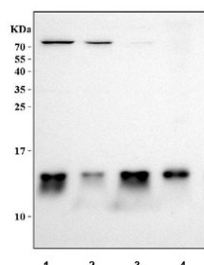


MIF Antibody / Macrophage migration inhibitory factor (R30122)

Catalog No.	Formulation	Size
R30122	0.5mg/ml if reconstituted with 0.2ml sterile DI water	100 ug

Bulk quote request

Availability	1-3 business days
Species Reactivity	Human
Format	Antigen affinity purified
Host	Rabbit
Clonality	Polyclonal (rabbit origin)
Isotype	Rabbit IgG
Purity	Antigen affinity
Buffer	Lyophilized from 1X PBS with 2% Trehalose
UniProt	P14174
Applications	Western Blot : 0.5-1ug/ml ELISA : 0.1-0.5ug/ml (human protein tested)
Limitations	This MIF antibody is available for research use only.



Western blot testing of human 1) Jurkat, 2) K562, 3) 293T and 4) PC-3 cell lysate with MIF antibody. Predicted molecular weight ~13 kDa.

Description

Macrophage migration inhibitory factor, MIF, is a cytokine released by T-lymphocytes, macrophages, and the pituitary gland that serves to integrate peripheral and central inflammatory responses. MIF gene has 3 exons separated by introns of only 189 and 95 bp, and covers less than 1kb. Localization of the human gene for macrophage migration inhibitory factor(MIF) to chromosome 22q11.2. MIF plays a critical role in inflammatory diseases and atherogenesis.

Application Notes

The stated application concentrations are suggested starting amounts. Titration of the MIF antibody may be required due to differences in protocols and secondary/substrate sensitivity.

Immunogen

Human partial recombinant protein (AA 1-115) was used as the immunogen for this MIF antibody.

Storage

After reconstitution, the MIF antibody can be stored for up to one month at 4°C. For long-term, aliquot and store at -20°C. Avoid repeated freezing and thawing.