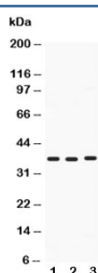


## Midkine Antibody (R30153)

Catalog No.	Formulation	Size
R30153	0.5mg/ml if reconstituted with 0.2ml sterile DI water	100 ug

**Bulk quote request**

<b>Availability</b>	1-3 business days
<b>Species Reactivity</b>	Human
<b>Format</b>	Antigen affinity purified
<b>Clonality</b>	Polyclonal (rabbit origin)
<b>Isotype</b>	Rabbit IgG
<b>Purity</b>	Antigen affinity
<b>Buffer</b>	Lyophilized from 1X PBS with 2.5% BSA and 0.025% sodium azide
<b>Gene ID</b>	4192
<b>Applications</b>	Western Blot : 0.5-1ug/ml
<b>Limitations</b>	This Midkine antibody is available for research use only.



Western blot testing of Midkine antibody and Lane 1: HeLa; 2: SMMC-7721; 3: SW620; Predicted size: 16KD; Observed size: 38KD

## Description

Midkine (MK or MDK), also known as neurite growth-promoting factor 2 (NEGF2), is a protein that in humans is encoded by the MDK gene. Midkine is a basic heparin-binding growth factor of low molecular weight, and forms a family with pleiotrophin (NEGF1, 46% homologous with MK). It is a nonglycosylated protein, composed of two domains held by disulfide bridges. It is a developmentally important retinoic acid-responsive gene product strongly induced during mid-gestation, hence the name midkine. Restricted mainly to certain tissues in the normal adult, it is strongly induced during oncogenesis, inflammation and tissue repair. Midkine is pleiotropic, capable of exerting activities such as cell proliferation, cell migration, angiogenesis and fibrinolysis. A molecular complex containing receptor-type tyrosine phosphatase zeta, low density lipoprotein receptor-related protein (LRP1), anaplastic leukemia kinase (ALK) and syndecans is considered to

be its receptor.

## Application Notes

The stated application concentrations are suggested starting amounts. Titration of the Midkine antibody may be required due to differences in protocols and secondary/substrate sensitivity.

## Immunogen

Human partial recombinant protein (AA 21-143) was used as the immunogen for this Midkine antibody.

## Storage

After reconstitution, the Midkine antibody can be stored for up to one month at 4°C. For long-term, aliquot and store at -20°C. Avoid repeated freezing and thawing.