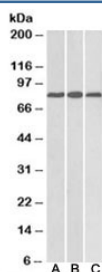


MID2 Antibody (R35255)

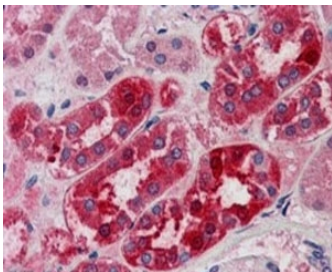
Catalog No.	Formulation	Size
R35255-100UG	0.5 mg/ml in 1X TBS, pH7.3, with 0.5% BSA (US sourced) and 0.02% sodium azide	100 ug

[Bulk quote request](#)

Availability	1-3 business days
Species Reactivity	Human, Mouse, Rat
Predicted Reactivity	Cow, Dog, Pig
Format	Antigen affinity purified
Host	Goat
Clonality	Polyclonal (goat origin)
Isotype	Goat Ig
Purity	Antigen affinity
Gene ID	11043
Applications	Western Blot : 1-3ug/ml Immunohistochemistry (FFPE) : 5-10ug/ml ELISA (peptide) LOD : 1:32000
Limitations	This MID2 antibody is available for research use only.



Western blot testing of mouse heart [A], rat heart [B], and rat kidney [C] lysates with MID2 antibody at 0.1ug/ml. Predicted molecular weight: ~80kDa.



IHC staining of FFPE human kidney with MID2 antibody at 5ug/ml. HIER: steamed with pH6 citrate buffer, AP-staining.

Description

Additional name(s) for this target protein: Midline 2, Tripartite motif protein 1, TRIM1

Application Notes

Optimal dilution of the MID2 antibody should be determined by the researcher.

Immunogen

Amino acids QESPYVSGMKTCH were used as the immunogen for this MID2 antibody.

Storage

Aliquot and store the MID2 antibody at -20oC.