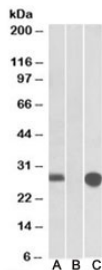


MID1IP1 Antibody (R34312)

Catalog No.	Formulation	Size
R34312-100UG	0.5 mg/ml in 1X TBS, pH7.3, with 0.5% BSA (US sourced) and 0.02% sodium azide	100 ug

[Bulk quote request](#)

Availability	1-3 business days
Species Reactivity	Human
Predicted Reactivity	Cow, Dog, Mouse, Rat
Format	Antigen affinity purified
Host	Goat
Clonality	Polyclonal (goat origin)
Isotype	Goat Ig
Purity	Antigen affinity
Gene ID	58526
Applications	Western Blot : 1-3ug/ml ELISA (peptide) LOD : 1:8000
Limitations	This MID1IP1 antibody is available for research use only.



Western blot of HEK293 lysate overexpressing human MID1IP1-MYC probed with MID1IP1 antibody [1ug/ml] in lane A and anti-MYC in lane C. Mock-transfected HEK293 probed with MID1IP1 antibody [1ug/ml] in lane B. Predicted molecular weight: ~20kDa but routinely observed at ~28kDa.

Description

Additional name(s) for this target protein: MID1 interacting protein 1, MID1 interacting G12-like protein, MIG12

Application Notes

Optimal dilution of the MID1IP1 antibody should be determined by the researcher.

Immunogen

Amino acids HTVLSKLTRK were used as the immunogen for this MID1IP1 antibody.

Storage

Aliquot and store the MID1IP1 antibody at -20oC.