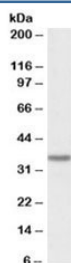


MICS1 Antibody (R35160)

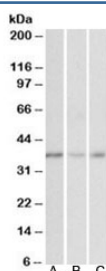
| Catalog No. | Formulation | Size |
|--------------|---|--------|
| R35160-100UG | 0.5 mg/ml in 1X TBS, pH7.3, with 0.5% BSA (US sourced) and 0.02% sodium azide | 100 ug |

[Bulk quote request](#)

| | |
|----------------------|--|
| Availability | 1-3 business days |
| Species Reactivity | Human |
| Predicted Reactivity | Mouse, Rat, Dog, Pig, Cow |
| Format | Antigen affinity purified |
| Host | Goat |
| Clonality | Polyclonal (goat origin) |
| Isotype | Goat Ig |
| Purity | Antigen affinity |
| Gene ID | 27069 |
| Applications | Western Blot : 0.01-0.1ug/ml ELISA (peptide) LOD : 1:8000 |
| Limitations | This MICS1 antibody is available for research use only. |



Western blot testing of HeLa cell lysate with MICS1 antibody at 0.3ug/ml. Predicted molecular weight: ~38 kDa.



Western blot testing of human cerebellum (A), duodenum (B) and heart (C) lysates with MICS1 antibody at 0.01ug/ml. Predicted molecular weight: ~38 kDa.

Description

Additional name(s) for this target protein: Mitochondrial morphology and cristae structure 1, Growth hormone inducible transmembrane protein, GHITM

Application Notes

Optimal dilution of the MICS1 antibody should be determined by the researcher.

Immunogen

Amino acids PSREYATKTRIGIR were used as the immunogen for this MICS1 antibody.

Storage

Aliquot and store the MICS1 antibody at -20oC.