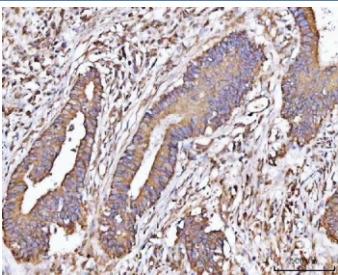


MICAL-like protein 2 Antibody / MICALL2 (RQ8431)

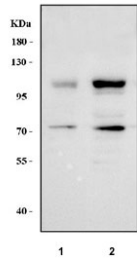
Catalog No.	Formulation	Size
RQ8431	0.5mg/ml if reconstituted with 0.2ml sterile DI water	100 ug

Bulk quote request

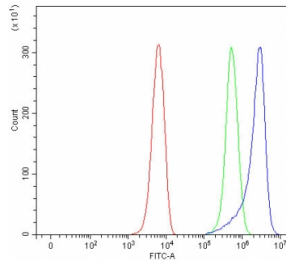
Availability	1-3 business days
Species Reactivity	Human
Format	Antigen affinity purified
Host	Rabbit
Clonality	Polyclonal (rabbit origin)
Isotype	Rabbit IgG
Purity	Antigen affinity purified
Buffer	Lyophilized from 1X PBS with 2% Trehalose
UniProt	Q8IY33
Localization	Cytoplasm
Applications	Western Blot : 0.5-1ug/ml Immunohistochemistry (FFPE) : 2-5ug/ml Flow Cytometry : 1-3ug/million cells Direct ELISA : 0.1-0.5ug/ml
Limitations	This MICAL-like protein 2 antibody is available for research use only.



IHC staining of FFPE human colorectal adenocarcinoma tissue with MICAL-like protein 2 antibody. HIER: boil tissue sections in pH8 EDTA for 20 min and allow to cool before testing.



Western blot testing of human 1) U-2 OS and 2) K562 cell lysate with MICAL-like protein 2 antibody. Predicted molecular weight ~98 kDa with multiple smaller isoforms including ~75 kDa and ~71 kDa.



Flow cytometry testing of fixed and permeabilized human K562 cells with MICAL-like protein 2 antibody at 1ug/million cells (blocked with goat sera); Red=cells alone, Green=isotype control, Blue= MICAL-like protein 2 antibody.

Description

Enables filamin binding activity. Involved in positive regulation of protein targeting to mitochondrion. Predicted to be located in several cellular components, including bicellular tight junction; neuron projection; and recycling endosome. Predicted to colocalize with stress fiber.

Application Notes

Optimal dilution of the MICAL-like protein 2 antibody should be determined by the researcher.

Immunogen

An E.coli-derived human recombinant protein (K132-Q741) was used as the immunogen for the MICAL-like protein 2 antibody.

Storage

After reconstitution, the MICAL-like protein 2 antibody can be stored for up to one month at 4oC. For long-term, aliquot and store at -20oC. Avoid repeated freezing and thawing.