

## MGP Antibody / Matrix Gla protein (R32430)

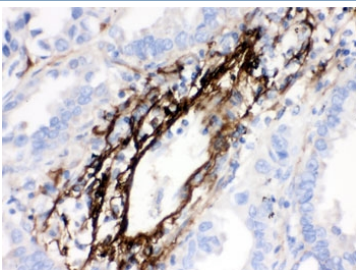
Catalog No.	Formulation	Size
R32430	0.5mg/ml if reconstituted with 0.2ml sterile DI water	100 ug

[Bulk quote request](#)

<b>Availability</b>	1-3 business days
<b>Species Reactivity</b>	Human
<b>Format</b>	Antigen affinity purified
<b>Host</b>	Rabbit
<b>Clonality</b>	Polyclonal (rabbit origin)
<b>Isotype</b>	Rabbit IgG
<b>Purity</b>	Antigen affinity
<b>Buffer</b>	Lyophilized from 1X PBS with 2.5% BSA and 0.025% sodium azide
<b>UniProt</b>	P08493
<b>Localization</b>	Cytoplasmic, membranous
<b>Applications</b>	Western Blot : 0.1-0.5ug/ml IHC (FFPE) : 0.5-1ug/ml
<b>Limitations</b>	This MGP antibody is available for research use only.



Western blot testing of human Jurkat cell lysate with MGP antibody. Expected molecular weight ~10 kDa.



IHC testing of FFPE human lung cancer tissue with MGP antibody. HIER: Boil the paraffin sections in pH 6, 10mM citrate buffer for 20 minutes and allow to cool prior to testing.

## Description

Matrix Gla protein (MGP) is an 84-residue vitamin K-dependent protein initially isolated from bovine bone. In addition, MGP is a 10-kD protein produced and secreted by vascular smooth muscle cells and chondrocytes and significantly accumulated in bone, cartilage, and dentin. It is also expressed at high levels in heart, kidney, and lung and is upregulated by vitamin D in bone cells. MGP has a high affinity binding to calcium ions, similar to other Gla-containing proteins. The protein acts as an inhibitor of vascular mineralization and plays a role in bone organization. And this gene is mapped to 12p12.3.

## Application Notes

Optimal dilution of the MGP antibody should be determined by the researcher.

## Immunogen

Amino acids Y20-F96 from the human protein were used as the immunogen for the MGP antibody.

## Storage

After reconstitution, the MGP antibody can be stored for up to one month at 4°C. For long-term, aliquot and store at -20°C. Avoid repeated freezing and thawing.