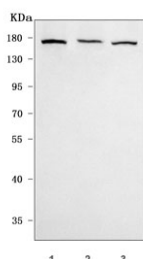


mGluR5 Antibody / Glutamate Metabotropic Receptor 5 / GRM5 (RQ7664)

Catalog No.	Formulation	Size
RQ7664	0.5mg/ml if reconstituted with 0.2ml sterile DI water	100 ug

Bulk quote request

Availability	1-3 business days
Species Reactivity	Human, Rat
Format	Antigen affinity purified
Clonality	Polyclonal (rabbit origin)
Isotype	Rabbit IgG
Purity	Antigen affinity purified
Buffer	Lyophilized from 1X PBS with 2% Trehalose
UniProt	P41594
Applications	Western Blot : 0.5-1ug/ml Direct ELISA : 0.1-0.5ug/ml
Limitations	This mGluR5 antibody is available for research use only.



Western blot testing of 1) human U-87 MG, 2) human 293T and 3) rat C6 cell lysate with mGluR5 antibody. Predicted molecular weight ~132 kDa but may be observed at higher molecular weights due to glycosylation.

Description

Metabotropic glutamate receptor 5 is a G protein-coupled receptor that in humans is encoded by the GRM5 gene. It is mapped to 11q14.2-q14.3. This gene encodes a member of the G-protein coupled receptor 3 protein family. The encoded protein is a metabotropic glutamate receptor, whose signaling activates a phosphatidylinositol-calcium second messenger system. This protein may be involved in the regulation of neural network activity and synaptic plasticity. Glutamatergic neurotransmission is involved in most aspects of normal brain function and can be perturbed in many neuropathologic conditions. A pseudogene of this gene has been defined on chromosome 11. Alternative splicing results in multiple transcript variants.

Application Notes

Optimal dilution of the mGluR5 antibody should be determined by the researcher.

Immunogen

E. coli-derived recombinant human protein (amino acids K443-S1050) was used as the immunogen for the mGluR5 antibody.

Storage

After reconstitution, the mGluR5 antibody can be stored for up to one month at 4°C. For long-term, aliquot and store at -20°C. Avoid repeated freezing and thawing.