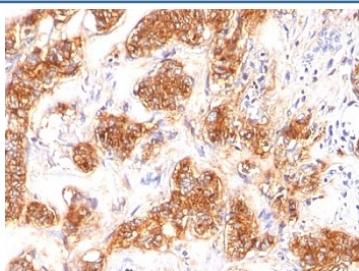


MFG-E8 Antibody [clone SPM291] (V2704)

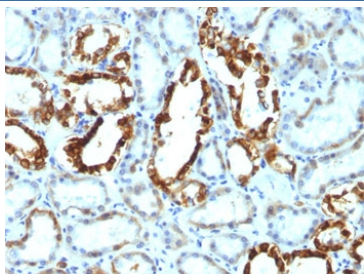
Catalog No.	Formulation	Size
V2704-100UG	0.2 mg/ml in 1X PBS with 0.1 mg/ml BSA (US sourced) and 0.05% sodium azide	100 ug
V2704-20UG	0.2 mg/ml in 1X PBS with 0.1 mg/ml BSA (US sourced) and 0.05% sodium azide	20 ug
V2704SAF-100UG	1 mg/ml in 1X PBS; BSA free, sodium azide free	100 ug
V2704IHC-7ML	Prediluted in 1X PBS with 0.1 mg/ml BSA (US sourced) and 0.05% sodium azide; *For IHC use only*	7 ml

Bulk quote request

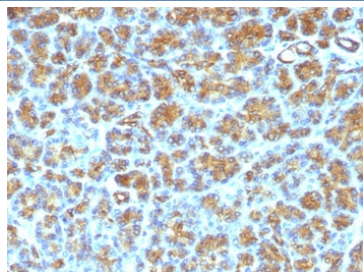
Availability	1-3 business days
Species Reactivity	Human
Format	Purified
Clonality	Monoclonal (mouse origin)
Isotype	Mouse IgG1, kappa
Clone Name	SPM291
Purity	Protein G affinity chromatography
UniProt	Q08431
Localization	Cell surface & cytoplasmic
Applications	Immunohistochemistry (FFPE) : 1-2ug/ml for 30 min at RT
Limitations	This MFG-E8 antibody is available for research use only.



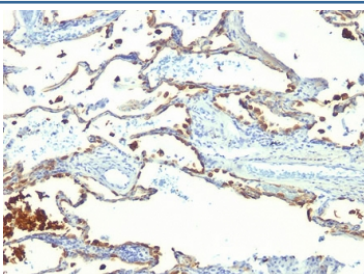
IHC: Formalin-fixed, paraffin-embedded human breast carcinoma stained with MFG-E8 antibody (SPM291)



IHC: FFPE human renal cell carcinoma tested with MFG-E8 antibody (SPM291)



IHC: FFPE human pancreas tested with MFG-E8 antibody (SPM291)



IHC: FFPE human lung carcinoma tested with MFG-E8 antibody (SPM291)

Description

Recognizes a protein of 40-45kDa, identified as human milk fat globule membrane protein (HMFG), Lactadherin or MFG-E8. HMFG is present on normal human breast epithelial cells and cell lines derived from breast carcinomas, as well as to the outer surface of the human milk fat globule. HMFG is considered as a differentiation marker. It is useful as specific breast epithelial marker and can also provide a tool to study the role of the cell surface in normal and neoplastic mammary development.

Application Notes

Optimal dilution of the MFG-E8 antibody should be determined by the researcher.

1. Staining of formalin-fixed tissues requires boiling tissue sections in 10mM Citrate buffer, pH 6.0, for 10-20 min followed by cooling at RT for 20 min
2. The prediluted format is supplied in a dropper bottle and is optimized for use in IHC. After epitope retrieval step (if required), drip mAb solution onto the tissue section and incubate at RT for 30 min.

Immunogen

A human milk fat globule membrane preparation was used as the immunogen for the MFG-E8 antibody.

Storage

Store the MFG-E8 antibody at 2-8°C (with azide) or aliquot and store at -20°C or colder (without azide).

