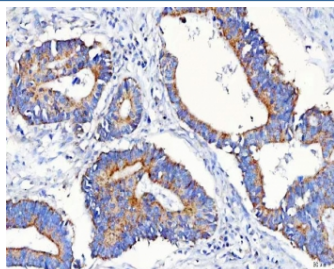


METAP1D Antibody / Methionine aminopeptidase 1D / MAP1D (RQ8426)

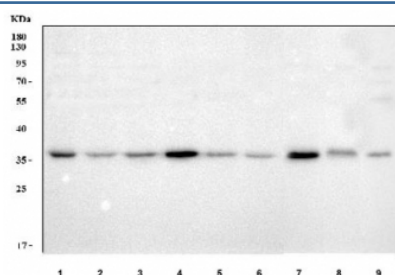
Catalog No.	Formulation	Size
RQ8426	0.5mg/ml if reconstituted with 0.2ml sterile DI water	100 ug

Bulk quote request

Availability	1-3 business days
Species Reactivity	Human, Mouse, Rat
Format	Antigen affinity purified
Clonality	Polyclonal (rabbit origin)
Isotype	Rabbit IgG
Purity	Antigen affinity purified
Buffer	Lyophilized from 1X PBS with 2% Trehalose
UniProt	Q6UB28
Localization	Cytoplasm
Applications	Western Blot : 0.5-1ug/ml Immunohistochemistry (FFPE) : 2-5ug/ml ELISA : 0.1-0.5ug/ml
Limitations	This METAP1D antibody is available for research use only.



IHC staining of FFPE human colorectal adenocarcinoma tissue with METAP1D antibody. HIER: boil tissue sections in pH8 EDTA for 20 min and allow to cool before testing.



Western blot testing of 1) human HEL, 2) human K562, 3) human 293T, 4) human HepG2, 5) human ThP-1, 6) human HeLa, 7) rat liver, 8) rat RH35 and 9) mouse Neuro-2a cell lysate with METAP1D antibody. Predicted molecular weight ~37 kDa.

Description

The N-terminal methionine excision pathway is an essential process in which the N-terminal methionine is removed from many proteins, thus facilitating subsequent protein modification. In mitochondria, enzymes that catalyze this reaction are called methionine aminopeptidases.

Application Notes

Optimal dilution of the METAP1D antibody should be determined by the researcher.

Immunogen

An E.coli-derived human recombinant protein (Q36-A335) was used as the immunogen for the METAP1D antibody.

Storage

After reconstitution, the METAP1D antibody can be stored for up to one month at 4oC. For long-term, aliquot and store at -20oC. Avoid repeated freezing and thawing.