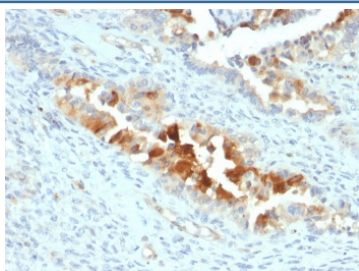


Mesothelin Antibody [clone SPM143] (V7654)

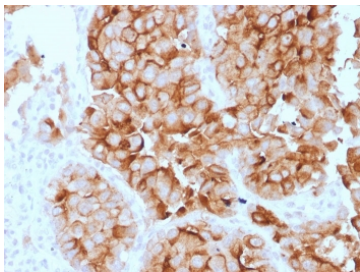
Catalog No.	Formulation	Size
V7654-100UG	0.2 mg/ml in 1X PBS with 0.1 mg/ml BSA (US sourced) and 0.05% sodium azide	100 ug
V7654-20UG	0.2 mg/ml in 1X PBS with 0.1 mg/ml BSA (US sourced) and 0.05% sodium azide	20 ug
V7654SAF-100UG	1 mg/ml in 1X PBS; BSA free, sodium azide free	100 ug

Bulk quote request

Availability	1-3 business days
Species Reactivity	Human
Format	Purified
Clonality	Monoclonal (mouse origin)
Isotype	Mouse IgG2b, kappa
Clone Name	SPM143
Purity	Protein G affinity chromatography
UniProt	Q13421
Localization	Cytoplasmic, cell surface, secreted
Applications	Immunohistochemistry (FFPE) : 1-2ug/ml
Limitations	This Mesothelin antibody is available for research use only.



IHC staining of FFPE human endometrial carcinoma with Mesothelin antibody (clone SPM143). HIER: boil tissue sections in pH 9 10mM Tris with 1mM EDTA for 10-20 min followed by cooling at RT for 20 min.



IHC staining of FFPE human lung mesothelioma with Mesothelin antibody (clone SPM143). HIER: boil tissue sections in pH 9 10mM Tris with 1mM EDTA for 10-20 min followed by cooling at RT for 20 min.

Description

Mesothelin is a 40kDa glycosyl-phosphatidylinositol-anchored glycoprotein cleaved from a 69kDa precursor protein. Mesothelin immunoreactivity is high in cancers of the ovary (serous papillary, endometrioid and undifferentiated) and pancreas, with less frequent staining seen in adenocarcinomas of the endometrium, lung and stomach/esophagus. Mesothelin is one of the most sensitive markers for mesothelioma.

Application Notes

Optimal dilution of the Mesothelin antibody should be determined by the researcher.

Immunogen

A portion of amino acids 273-407 from the human protein was used as the immunogen for this MSLN antibody.

Storage

Store the Mesothelin antibody at 2-8oC (with azide) or aliquot and store at -20oC or colder (without azide).