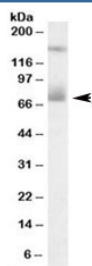


## Mesothelin Antibody (R33304)

Catalog No.	Formulation	Size
R33304-100UG	0.5 mg/ml in 1X TBS, pH7.3, with 0.5% BSA (US sourced) and 0.02% sodium azide	100 ug

[Bulk quote request](#)

<b>Availability</b>	1-3 business days
<b>Species Reactivity</b>	Human
<b>Format</b>	Antigen affinity purified
<b>Host</b>	Goat
<b>Clonality</b>	Polyclonal (goat origin)
<b>Isotype</b>	Goat Ig
<b>Purity</b>	Antigen affinity
<b>Gene ID</b>	10232
<b>Applications</b>	Western Blot : 0.3-1ug/ml ELISA (peptide) LOD : 1:64000
<b>Limitations</b>	This Mesothelin antibody is available for research use only.



Western blot testing of human placenta lysate with Mesothelin antibody at 0.3ug/ml. The expected ~70kDa band and the additional ~150kDa band are both blocked by the immunizing peptide.

### Description

Additional name(s) for this target protein: MSLN

This Mesothelin antibody is part of a [broader Mesothelin antibody panel](#) offered by NSJ Bioreagents.

### Application Notes

Optimal dilution of the Mesothelin antibody should be determined by the researcher.

## **Immunogen**

Amino acids CPSGKKAREIDES were used as the immunogen for this Mesothelin antibody.

## **Storage**

Aliquot and store the Mesothelin antibody at -20oC.