

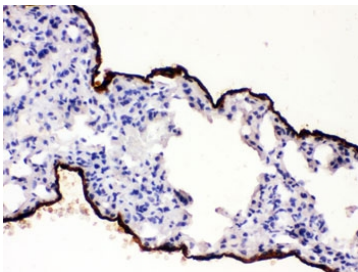
Mesothelin Antibody (R32262)

Catalog No.	Formulation	Size
R32262	0.5mg/ml if reconstituted with 0.2ml sterile DI water	100 ug

 Citations (1)

[Bulk quote request](#)

Availability	1-3 business days
Species Reactivity	Mouse
Format	Antigen affinity purified
Host	Rabbit
Clonality	Polyclonal (rabbit origin)
Isotype	Rabbit IgG
Purity	Antigen affinity
Buffer	Lyophilized from 1X PBS with 2.5% BSA and 0.025% sodium azide
UniProt	Q61468
Localization	Cytoplasmic, cell surface, secreted
Applications	Immunohistochemistry (FFPE) : 0.5-1ug/ml
Limitations	This Mesothelin antibody is available for research use only.



IHC testing of FFPE mouse lung with Mesothelin antibody. HIER: Boil the paraffin sections in pH 6, 10mM citrate buffer for 20 minutes and allow to cool prior to staining.

Description

Mesothelin, also known as MSLN or MPF, is a protein that in humans is encoded by the MSLN gene. This gene is mapped to 16p13.3. This gene encodes a precursor protein that is cleaved into two products, megakaryocyte potentiating factor and mesothelin. Megakaryocyte potentiation factor functions as a cytokine that can stimulate colony formation in bone marrow megakaryocytes. Mesothelin is a glycosylphosphatidylinositol-anchored cell-surface protein that may function as a cell adhesion protein. This protein is overexpressed in epithelial mesotheliomas, ovarian cancers and in

specific squamous cell carcinomas.

Application Notes

Optimal dilution of the Mesothelin antibody should be determined by the researcher.

Immunogen

Amino acids 308-576 of mouse Mesothelin were used as the immunogen for the Mesothelin antibody.

Storage

After reconstitution, the Mesothelin antibody can be stored for up to one month at 4°C. For long-term, aliquot and store at -20°C. Avoid repeated freezing and thawing.