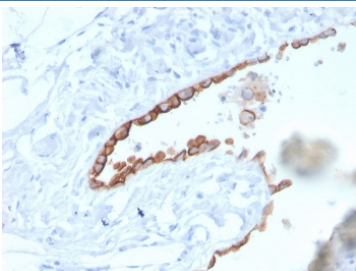


Mesothelin Antibody / Mesothelioma Marker Antibody [clone MSLN/3384] (V8529)

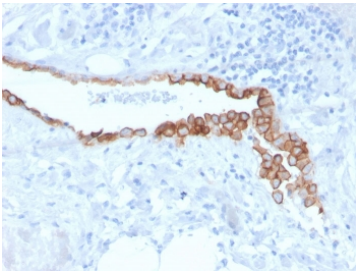
Catalog No.	Formulation	Size
V8529-100UG	0.2 mg/ml in 1X PBS with 0.1 mg/ml BSA (US sourced) and 0.05% sodium azide	100 ug
V8529-20UG	0.2 mg/ml in 1X PBS with 0.1 mg/ml BSA (US sourced) and 0.05% sodium azide	20 ug
V8529SAF-100UG	1 mg/ml in 1X PBS; BSA free, sodium azide free	100 ug

Bulk quote request

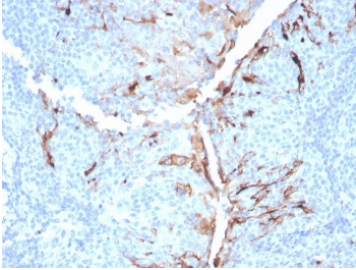
Availability	1-3 business days
Species Reactivity	Human
Format	Purified
Host	Mouse
Clonality	Monoclonal (mouse origin)
Isotype	Mouse IgG1, kappa
Clone Name	MSLN/3384
Purity	Protein G affinity chromatography
UniProt	Q13421
Localization	Cytoplasmic, cell surface, secreted
Applications	Immunohistochemistry (FFPE) : 1-2ug/ml for 30 minutes at RT
Limitations	This Mesothelin Antibody / Mesothelioma Marker Antibody is available for research use only.



Mesothelin Antibody Mesothelioma IHC. Immunohistochemistry analysis of mesothelin expression in FFPE human lung mesothelioma using clone MSLN/3384. Distinct membranous HRP-DAB brown staining highlights tumor cell surfaces with focal cytoplasmic signal, consistent with cell surface localization of MSLN. The staining pattern clearly delineates mesothelioma cells from surrounding stromal components, supporting its use as a mesothelioma marker in tissue sections. Heat-induced epitope retrieval was performed in pH 9 Tris-EDTA buffer.



Mesothelioma Marker Antibody in Lung Tumor Tissue. Mesothelin antibody staining of FFPE human lung mesothelioma demonstrates strong membranous labeling of tumor cells using clone MSLN/3384. The crisp cell surface staining pattern emphasizes mesothelial differentiation and provides clear contrast against non-neoplastic tissue. This expression profile is consistent with known mesothelin distribution in mesothelioma. HIER: boiling in pH 9 Tris with EDTA followed by cooling prior to staining.

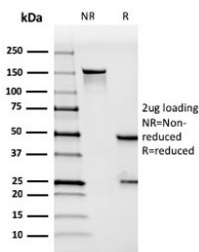


Mesothelin / MSLN Antibody Lung Mesothelioma IHC. Immunohistochemical detection of mesothelin (MSLN) in FFPE human lung mesothelioma using clone MSLN/3384 reveals prominent membranous HRP-DAB staining with partial cytoplasmic localization. Tumor cells exhibit strong, continuous surface labeling, aiding visualization of tumor architecture and mesothelial origin. The observed staining pattern aligns with established mesothelin expression in mesothelioma. Heat-induced epitope retrieval was performed using pH 9 Tris-EDTA buffer.

Human Protein Microarray Specificity Validation



Analysis of HuProt(TM) microarray containing more than 19,000 full-length human proteins using Mesothelin antibody (clone MSLN/3384). These results demonstrate the foremost specificity of the MSLN/3384 mAb. Z- and S- score: The Z-score represents the strength of a signal that an antibody (in combination with a fluorescently-tagged anti-IgG secondary Ab) produces when binding to a particular protein on the HuProt(TM) array. Z-scores are described in units of standard deviations (SD's) above the mean value of all signals generated on that array. If the targets on the HuProt(TM) are arranged in descending order of the Z-score, the S-score is the difference (also in units of SD's) between the Z-scores. The S-score therefore represents the relative target specificity of an Ab to its intended target.



SDS-PAGE analysis of purified, BSA-free Mesothelin antibody (clone MSLN/3384) as confirmation of integrity and purity.

Description

Mesothelin (MSLN) is a glycosylphosphatidylinositol-anchored cell surface protein with highly restricted expression in normal mesothelial cells lining the pleura, peritoneum, and pericardium, but marked overexpression in malignant mesothelioma and select epithelial cancers. Mesothelin Antibody is widely recognized as a mesothelioma marker antibody due to this distinct expression pattern, enabling reliable identification of mesothelial lineage and tumor-associated mesothelin expression. The strong contrast between limited normal tissue distribution and tumor upregulation makes mesothelin a critical biomarker in cancer research and diagnostic pathology.

Mesothelin antibody, also referred to as MSLN antibody or mesothelioma-associated antigen antibody, produces characteristic membranous and cytoplasmic staining consistent with its cell surface localization and proteolytic processing. In tissue-based assays, expression is largely confined to mesothelial cells under physiologic conditions, while most non-mesothelial tissues demonstrate minimal to absent signal. This restricted baseline expression enhances interpretability and supports high-confidence detection of mesothelin-positive cell populations.

As a mesothelioma marker antibody, this clone provides robust detection of malignant mesothelioma, where strong and

diffuse membranous staining is typically observed across tumor cells. Mesothelin expression is also present in a subset of aggressive epithelial malignancies, including ovarian serous carcinoma and pancreatic ductal adenocarcinoma, reflecting its role as a tumor-associated antigen. Importantly, the absence of staining in many other tumor types provides clear diagnostic contrast, aiding in the differentiation of mesothelioma from morphologically overlapping malignancies such as metastatic adenocarcinoma.

This antibody is further distinguished by protein microarray specificity validation using a HuProt(TM) platform comprising over 19,000 full-length human proteins. Clone MSLN/3384 demonstrates a dominant and highly selective binding profile to mesothelin, with a markedly elevated Z-score and strong separation from all secondary signals. This large specificity gap indicates minimal cross-reactivity and provides robust evidence of target selectivity, supporting reliable performance across experimental applications.

Functionally, mesothelin contributes to tumor progression through cell adhesion and interaction with MUC16 (CA125), facilitating tumor cell attachment and dissemination within serosal cavities. Its involvement in cancer biology, combined with its restricted normal tissue expression, underlies its importance as both a diagnostic marker and therapeutic target. Overall, Mesothelin Antibody provides highly specific, high-confidence detection of mesothelin expression, supporting accurate identification of mesothelioma and detailed analysis of mesothelin-associated tumor biology.

This Mesothelin antibody is part of a [broader Mesothelin antibody panel](#) offered by NSJ Bioreagents.

Application Notes

Optimal dilution of the Mesothelin Antibody / Mesothelioma Marker Antibody should be determined by the researcher.

Immunogen

A portion of amino acids 273-407 from the human protein was used as the immunogen for the Mesothelin antibody.

Storage

Store the Mesothelin antibody at 2-8oC (with azide) or aliquot and store at -20oC or colder (without azide).

Alternate Names

MSLN antibody, Mesothelioma marker antibody, Mesothelin antigen antibody, CA125-binding protein antibody, Mesothelial cell marker antibody