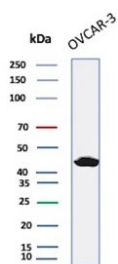


## Mesothelin Antibody / MSLN [clone MSLN/2132] (V5641)

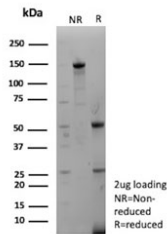
Catalog No.	Formulation	Size
V5641-100UG	0.2 mg/ml in 1X PBS with 0.1 mg/ml BSA (US sourced), 0.05% sodium azide	100 ug
V5641-20UG	0.2 mg/ml in 1X PBS with 0.1 mg/ml BSA (US sourced), 0.05% sodium azide	20 ug
V5641SAF-100UG	1 mg/ml in 1X PBS; BSA free, sodium azide free	100 ug

[Bulk quote request](#)

<b>Availability</b>	1-3 business days
<b>Species Reactivity</b>	Human
<b>Format</b>	Purified
<b>Host</b>	Mouse
<b>Clonality</b>	Monoclonal (mouse origin)
<b>Isotype</b>	Mouse IgG2b, kappa
<b>Clone Name</b>	MSLN/2132
<b>Purity</b>	Protein G affinity
<b>UniProt</b>	Q13421
<b>Localization</b>	Cell membrane, Golgi apparatus, Secreted
<b>Applications</b>	Western Blot : 1-2ug/ml
<b>Limitations</b>	This Mesothelin antibody is available for research use only.



Western blot testing of human OVCAR-3 cell lysate with Mesothelin antibody (clone MSLN/2132). Predicted molecular weight ~69 kDa (precursor), ~40 kDa (cleaved form). Glycosylation may make the protein run higher than expected.



SDS-PAGE analysis of purified, BSA-free Mesothelin antibody (clone MSLN/2132) as confirmation of integrity and purity.

## Description

Mesothelin is a 40kDa glycosyl-phosphatidylinositol-anchored glycoprotein cleaved from a 69kDa precursor protein. Mesothelin immunoreactivity is high in cancers of the ovary (serous papillary, endometrioid and undifferentiated) and pancreas, with less frequent staining seen in adenocarcinomas of the endometrium, lung and stomach/esophagus. Mesothelin is one of the most sensitive markers for mesothelioma.

## Application Notes

Optimal dilution of the Mesothelin antibody should be determined by the researcher.

## Immunogen

A portion of amino acids 273-407 from human Mesothelin protein was used as the immunogen for the Mesothelin antibody.

## Storage

Aliquot the Mesothelin antibody and store frozen at -20oC or colder. Avoid repeated freeze-thaw cycles.