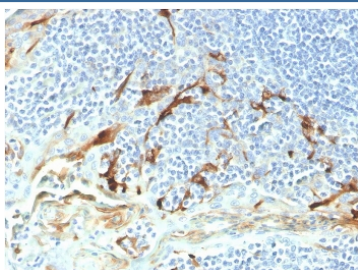


## Mesothelin Antibody / MSLN [clone MSLN/2131] (V3820BTN)

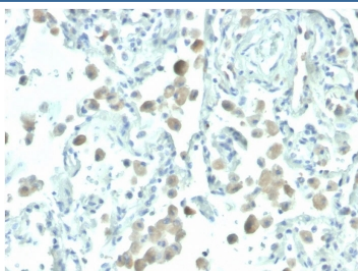
Catalog No.	Formulation	Size
V3820BTN	0.1 mg/ml with 0.1 mg/ml BSA (US sourced), 0.05% sodium azide	500 ul

**Bulk quote request**

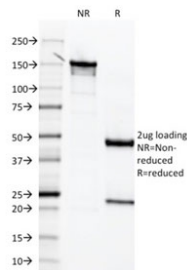
<b>Availability</b>	1-3 business days
<b>Species Reactivity</b>	Human, Mouse and Rat
<b>Format</b>	Biotin Conjugate
<b>Clonality</b>	Monoclonal (mouse origin)
<b>Isotype</b>	Mouse IgG2b, kappa
<b>Clone Name</b>	MSLN/2131
<b>Purity</b>	Protein G affinity chromatography
<b>UniProt</b>	Q13421
<b>Localization</b>	Cytoplasmic, cell surface, secreted
<b>Applications</b>	Immunohistochemistry (FFPE) : 2-4ug/ml for 30 minutes at RT
<b>Limitations</b>	This Mesothelin antibody is available for research use only.



IHC staining of FFPE human endometrial carcinoma with biotinylated Mesothelin antibody (clone MSLN/2131). HIER: boil tissue sections in pH 9 10mM Tris with 1mM EDTA for 20 min and allow to cool before testing.

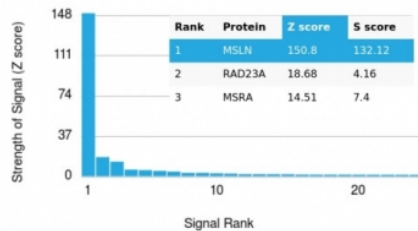


IHC staining of FFPE human lung with biotinylated Mesothelin antibody (clone MSLN/2131). HIER: boil tissue sections in pH 9 10mM Tris with 1mM EDTA for 20 min and allow to cool before testing.



SDS-PAGE analysis of purified, BSA-free Mesothelin antibody (clone MSLN/2131) as confirmation of integrity and purity.

Human Protein Microarray Specificity Validation



Analysis of HuProt(TM) microarray containing more than 19,000 full-length human proteins using Mesothelin antibody (clone MSLN/2131). These results demonstrate the foremost specificity of the MSLN/2131 mAb. Z- and S- score: The Z-score represents the strength of a signal that an antibody (in combination with a fluorescently-tagged anti-IgG secondary Ab) produces when binding to a particular protein on the HuProt(TM) array. Z-scores are described in units of standard deviations (SD's) above the mean value of all signals generated on that array. If the targets on the HuProt(TM) are arranged in descending order of the Z-score, the S-score is the difference (also in units of SD's) between the Z-scores. The S-score therefore represents the relative target specificity of an Ab to its intended target.

## Description

Mesothelin is a 40kDa glycosyl-phosphatidylinositol-anchored glycoprotein cleaved from a 69kDa precursor protein. Mesothelin immunoreactivity is high in cancers of the ovary (serous papillary, endometrioid and undifferentiated) and pancreas, with less frequent staining seen in adenocarcinomas of the endometrium, lung and stomach/esophagus. Mesothelin is one of the most sensitive markers for mesothelioma.

## Application Notes

Optimal dilution of the Mesothelin antibody should be determined by the researcher.

## Immunogen

A portion of amino acids 273-407 from the human protein was used as the immunogen for the Mesothelin antibody.

## Storage

Store the Mesothelin antibody at 2-8oC (up to one month) or aliquot and store at -20oC (longer term).