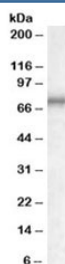


MEPCE Antibody (R36239)

Catalog No.	Formulation	Size
R36239-100UG	0.5 mg/ml in 1X TBS, pH7.3, with 0.5% BSA (US sourced) and 0.02% sodium azide	100 ug

[Bulk quote request](#)

Availability	1-3 business days
Species Reactivity	Human
Format	Antigen affinity purified
Clonality	Polyclonal (goat origin)
Isotype	Goat Ig
Purity	Antigen affinity
Gene ID	56257
Applications	Western Blot : 0.3-1ug/ml ELISA (peptide) LOD : 1:16000
Limitations	This MEPCE antibody is available for research use only.



Western blot testing of K562 lysate with MEPCE antibody at 0.3ug/ml. Predicted molecular weight: ~75kDa.

Description

Additional name(s) for this target protein: Methylphosphate capping enzyme; BIN3

Application Notes

Optimal dilution of the MEPCE antibody should be determined by the researcher.

Immunogen

Amino acids TPHNTSKGFQRP were used as the immunogen for this MEPCE antibody.

Storage

Aliquot and store the MEPCE antibody at -20oC.