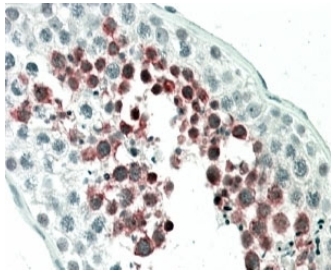


## MEPCE Antibody (R34599)

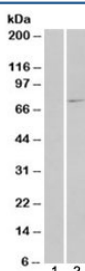
Catalog No.	Formulation	Size
R34599-100UG	0.5 mg/ml in 1X TBS, pH7.3, with 0.5% BSA (US sourced) and 0.02% sodium azide	100 ug

[Bulk quote request](#)

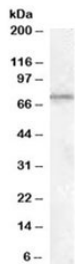
<b>Availability</b>	1-3 business days
<b>Species Reactivity</b>	Human, Mouse, Rat
<b>Format</b>	Antigen affinity purified
<b>Host</b>	Goat
<b>Clonality</b>	Polyclonal (goat origin)
<b>Isotype</b>	Goat Ig
<b>Purity</b>	Antigen affinity
<b>Gene ID</b>	56257
<b>Applications</b>	Western Blot : 1-3ug/ml Immunohistochemistry (FFPE) : 5-10ug/ml ELISA (peptide) LOD : 1:2000
<b>Limitations</b>	This MEPCE antibody is available for research use only.



IHC staining of FFPE human testis with MEPCE antibody at 5ug/ml. HIER: steamed with pH6 citrate buffer, AP-staining.



Western blot of HEK293 lysate overexpressing MEPCE probed with MEPCE antibody (mock transfection in lane 1). Predicted molecular weight: ~75kDa.



Western blot testing of rat testis lysate with MEPCE antibody at 1ug/ml. Predicted molecular weight: ~75kDa.

## Description

Additional name(s) for this target protein: Methylphosphate capping enzyme

## Application Notes

Optimal dilution of the MEPCE antibody should be determined by the researcher.

## Immunogen

Amino acids KQQRKFQYGN YCK were used as the immunogen for this MEPCE antibody.

## Storage

Aliquot and store the MEPCE antibody at -20oC.