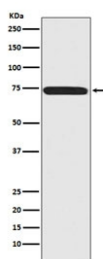


Menin Antibody / MEN1 [clone ACBA-13] (RQ4687)

Catalog No.	Formulation	Size
RQ4687	Antibody in PBS with 0.02% sodium azide, 50% glycerol and 0.4-0.5mg/ml BSA	100 ul

[Bulk quote request](#)

Availability	1-2 weeks
Species Reactivity	Human
Format	Purified
Clonality	Rabbit Monoclonal
Isotype	Rabbit IgG
Clone Name	ACBA-13
Purity	Affinity purified
UniProt	O00255
Applications	Western Blot : 1:1000-1:5000
Limitations	This Menin antibody is available for research use only.



Western blot testing of human 293T cell lysate with Menin antibody. Predicted molecular weight ~68 kDa.

Description

Menin, the protein product of the MEN1 gene, is a component of the mixed-lineage leukemia protein (MLL) -containing histone methyltransferase complex that facilitates methylation of histone H3 Lys4 to promote transcriptional activation.

Application Notes

Optimal dilution of the Menin antibody should be determined by the researcher.

Immunogen

A synthetic peptide specific to human Menin / MEN1 was used as the immunogen for the Menin antibody.

Storage

Store the Menin antibody at -20oC.