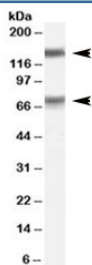


MELK Antibody (R34627)

Catalog No.	Formulation	Size
R34627-100UG	0.5 mg/ml in 1X TBS, pH7.3, with 0.5% BSA (US sourced) and 0.02% sodium azide	100 ug

[Bulk quote request](#)

Availability	1-3 business days
Species Reactivity	Human
Predicted Reactivity	Cow, Dog, Mouse
Format	Antigen affinity purified
Host	Goat
Clonality	Polyclonal (goat origin)
Isotype	Goat Ig
Purity	Antigen affinity
Gene ID	9833
Applications	Western Blot : 0.1-0.3ug/ml ELISA (peptide) LOD : 1:32000
Limitations	This MELK antibody is available for research use only.



Western blot testing of human testis lysate with MELK antibody at 0.1ug/ml. Predicted molecular weight: ~75/150 kDa (unmodified/glycosylated).

Description

Additional name(s) for this target protein: Maternal embryonic leucine zipper kinase

Application Notes

Optimal dilution of the MELK antibody should be determined by the researcher.

Immunogen

Amino acids KRLVEDILSSCKV were used as the immunogen for this MELK antibody.

Storage

Aliquot and store the MELK antibody at -20oC.