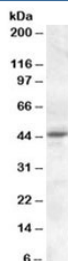


Melatonin receptor Antibody (R35964)

Catalog No.	Formulation	Size
R35964-100UG	0.5 mg/ml in 1X TBS, pH7.3, with 0.5% BSA (US sourced) and 0.02% sodium azide	100 ug

[Bulk quote request](#)

Availability	1-3 business days
Species Reactivity	Human
Predicted Reactivity	Cow, Dog, Mouse
Format	Antigen affinity purified
Host	Goat
Clonality	Polyclonal (goat origin)
Isotype	Goat Ig
Purity	Antigen affinity
Gene ID	4543
Applications	Western Blot : 0.3-1ug/ml ELISA (peptide) LOD : 1:8000
Limitations	This Melatonin receptor antibody is available for research use only.



Western blot testing of KELLY lysate with Melatonin receptor antibody at 0.3ug/ml.
Predicted molecular weight: ~40kDa.

Description

Additional name(s) for this target protein: MTNR1A; melatonin receptor 1A; MEL-1A-R; MT1

Application Notes

Optimal dilution of the Melatonin receptor antibody should be determined by the researcher.

Immunogen

Amino acids SLKYDKLYSSKNS were used as the immunogen for this Melatonin receptor antibody.

Storage

Aliquot and store the Melatonin receptor antibody at -20oC.