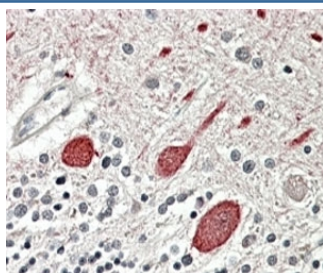


Melatonin receptor 1B Antibody (R35212)

Catalog No.	Formulation	Size
R35212-100UG	0.5 mg/ml in 1X TBS, pH7.3, with 0.5% BSA (US sourced) and 0.02% sodium azide	100 ug

[Bulk quote request](#)

Availability	1-3 business days
Species Reactivity	Human
Format	Antigen affinity purified
Clonality	Polyclonal (goat origin)
Isotype	Goat Ig
Purity	Antigen affinity
Gene ID	4544
Applications	Immunohistochemistry (FFPE) : 3-6ug/ml ELISA (peptide) LOD : 1:32000
Limitations	This Melatonin receptor 1B antibody is available for research use only.



IHC testing of FFPE human cerebellum with Melatonin receptor 1B antibody at 4ug/ml.
HIER: steamed with pH6 citrate buffer, AP-staining.

Description

Additional name(s) for this target protein: MEL-1B-R, MT2; MTNR1B

Application Notes

Optimal dilution of the Melatonin receptor 1B antibody should be determined by the researcher.

Immunogen

Amino acids QDASKGSHAEGLQSP were used as the immunogen for this Melatonin receptor 1B antibody.

Storage

Aliquot and store the Melatonin receptor 1B antibody at -20oC.