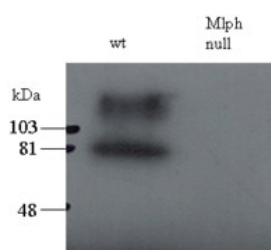


Melanophilin Antibody (R33165)

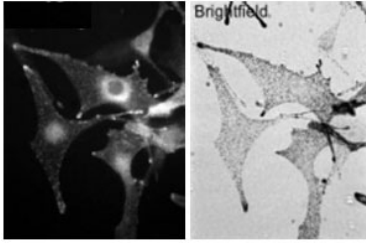
Catalog No.	Formulation	Size
R33165-100UG	0.5 mg/ml in 1X TBS, pH7.3, with 0.5% BSA (US sourced) and 0.02% sodium azide	100 ug

[Bulk quote request](#)

Availability	1-3 business days
Species Reactivity	Mouse
Predicted Reactivity	Rat
Format	Antigen affinity purified
Host	Goat
Clonality	Polyclonal (goat origin)
Isotype	Goat Ig
Purity	Antigen affinity
Gene ID	171531
Applications	Western Blot : 0.5-2ug/ml Immunofluorescence : 0.5-1ug/ml ELISA (peptide) LOD : 1:32000
Limitations	This Melanophilin antibody is available for research use only.



Western blot testing of total melanocyte PNS (200ug per lane) of wild-type and melanophilin null (Mlph null) mice with Melanophilin antibody at 0.5ug/ml. The upper band may represent the stacking-separating gel interface.



Immunofluorescence: Wild-type C57bl6 derived melanocytes tested with Melanophilin antibody (0.5ug/ml) and detected with Alexa Fluor 568 secondary. Brightfield image shows melanosome distribution.

Description

Additional name(s) for this target protein: Mlph

Application Notes

Optimal dilution of the Melanophilin antibody should be determined by the researcher.

Immunogen

Amino acids ARHIFAKPVMAQQP were used as the immunogen for this Melanophilin antibody.

Storage

Aliquot and store the Melanophilin antibody at -20oC.