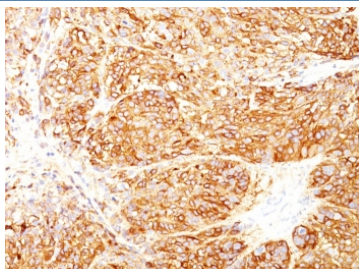


Melanoma Marker Antibody Cocktail (MART-1 & gp100) [clone DT101+ BC199 + HMB45] (V8320)

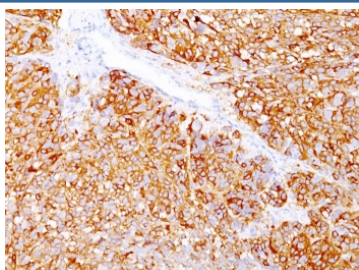
Catalog No.	Formulation	Size
V8320-100UG	0.2 mg/ml in 1X PBS with 0.1 mg/ml BSA (US sourced) and 0.05% sodium azide	100 ug
V8320-20UG	0.2 mg/ml in 1X PBS with 0.1 mg/ml BSA (US sourced) and 0.05% sodium azide	20 ug
V8320SAF-100UG	1 mg/ml in 1X PBS; BSA free, sodium azide free	100 ug

[Bulk quote request](#)

Availability	1-3 business days
Species Reactivity	Human
Format	Purified
Clonality	Monoclonal (mouse origin)
Isotype	IgG2b, kappa + IgG2b, lambda + IgG1, kappa
Clone Name	DT101+ BC199 + HMB45
Purity	Protein G affinity chromatography
Applications	Immunohistochemistry (FFPE) : 1-2ug/ml
Limitations	This Melanoma Marker antibody cocktail is available for research use only.



IHC staining of FFPE human melanoma tissue with Melanoma Marker antibody cocktail (clones DT101+ BC199 + HMB45). HIER: boil tissue sections in pH 9 10mM Tris with 1mM EDTA for 20 min and allow to cool before testing.



IHC staining of FFPE human melanoma tissue with Melanoma Marker antibody cocktail (clones DT101+ BC199 + HMB45). HIER: boil tissue sections in pH 9 10mM Tris with 1mM EDTA for 20 min and allow to cool before testing.

Description

This antibody cocktail recognizes two melanoma-specific proteins, which include MART-1 and gp100. MART-1 is a newly identified melanocyte differentiation antigen recognized by autologous cytotoxic T lymphocytes. Function of gp100 is not known but it is reported to be a useful marker for melanocytes and melanomas. A cocktail of these two markers is sensitive for labeling formalin-fixed, paraffin-embedded melanomas and other tumors showing melanocytic differentiation.

Application Notes

Optimal dilution of the Melanoma Marker antibody cocktail should be determined by the researcher.

Immunogen

Recombinant hMART-1 protein (DT101 & BC199) and extract of pigmented melanoma metastases from lymph nodes (HMB45) were used as the immunogen for this Melanoma Marker antibody cocktail.

Storage

Store the Melanoma Marker antibody cocktail at 2-8oC (with azide) or aliquot and store at -20oC or colder (without azide).