

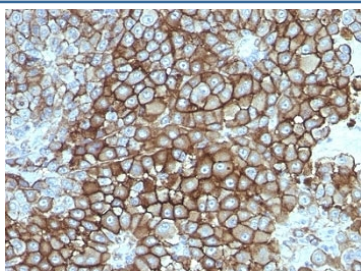
Melanoma Associated Antigen KBA.62 Antibody [clone KBA.62] (V3072)

Catalog No.	Formulation	Size
V3072-100UG	0.2 mg/ml in 1X PBS with 0.1 mg/ml BSA (US sourced) and 0.05% sodium azide	100 ug
V3072-20UG	0.2 mg/ml in 1X PBS with 0.1 mg/ml BSA (US sourced) and 0.05% sodium azide	20 ug
V3072SAF-100UG	1 mg/ml in 1X PBS; BSA free, sodium azide free	100 ug
V3072IHC-7ML	Prediluted in 1X PBS with 0.1 mg/ml BSA (US sourced) and 0.05% sodium azide; *For IHC use only*	7 ml

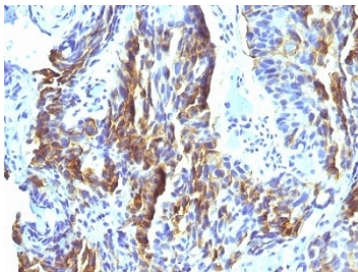
 Citations (11)

[Bulk quote request](#)

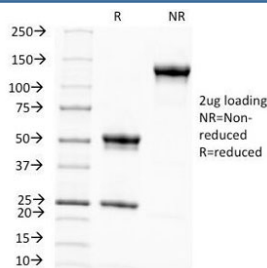
Availability	1-3 business days
Species Reactivity	Human
Format	Purified
Clonality	Monoclonal (mouse origin)
Isotype	Mouse IgG1, kappa
Clone Name	KBA.62
Purity	Protein G affinity chromatography
UniProt	Not Known
Localization	Cell surface and cytoplasmic
Applications	Immunofluorescence : 0.5-1ug/ml Immunohistochemistry (FFPE) : 0.5-1ug/ml for 30 min at RT
Limitations	This Melanoma Associated Antigen KBA.62 antibody is available for research use only.



IHC: Formalin-fixed, paraffin-embedded human melanoma stained with Melanoma Associated Antigen antibody (clone KBA.62).



IHC: Formalin-fixed, paraffin-embedded human tongue stained with Melanoma Associated Antigen antibody (clone KBA.62).



SDS-PAGE Analysis of Purified, BSA-Free Melanoma Associated Antigen Antibody (clone KBA.62). Confirmation of Integrity and Purity of the Antibody.

Description

KBA.62 is a novel anti-melanoma antibody. It reacts positively against melanocytic tumors but not other tumors, thus demonstrating specificity and sensitivity. Moreover, it reacts positively against junctional nevus cells but not intradermal nevi, and against fetal melanocytes but not normal adult melanocytes. KBA.62 antibody is useful in identifying malignant melanomas. Metastatic amelanotic melanoma can often be confused with a variety of poorly differentiated carcinomas, large cell lymphomas, sarcomas, spindle cell carcinomas and various types of mesenchymal neoplasms. A keratin-negative, vimentin-rich neoplasm that immuno-reacts with antibody to S-100 protein and with KBA.62 antibody is, with rare exception, a melanoma. Anti-KBA.62 is a useful additional marker for melanoma, specifically in desmoplastic/spindle cell cases and in the context of micro-metastasis in sentinel lymph node.

Application Notes

Optimal dilution of the Melanoma Associated Antigen KBA.62 antibody should be determined by the researcher.

1. Staining of formalin-fixed tissues requires boiling tissue sections in 10mM Citrate buffer, pH 6.0, for 10-20 min followed by cooling at RT for 20 min.
2. The prediluted format is supplied in a dropper bottle and is optimized for use in IHC. After epitope retrieval step (if required), drip mAb solution onto the tissue section and incubate at RT for 30 min.

Immunogen

Human KAL cells derived from lymph node metastasis of malignant melanoma were used as the immunogen for the Melanoma Associated Antigen KBA.62 antibody.

Storage

Store the Melanoma Associated Antigen KBA.62 antibody at 2-8°C (with azide) or aliquot and store at -20°C or colder (without azide).

