

Melanoma Antibody / PNL2 [clone PNL2] (V3071)

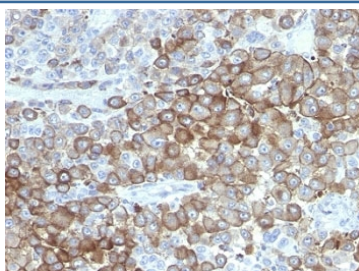
Catalog No.	Formulation	Size
V3071-100UG	0.2 mg/ml in 1X PBS with 0.1 mg/ml BSA (US sourced) and 0.05% sodium azide	100 ug
V3071-20UG	0.2 mg/ml in 1X PBS with 0.1 mg/ml BSA (US sourced) and 0.05% sodium azide	20 ug
V3071SAF-100UG	1 mg/ml in 1X PBS; BSA free, sodium azide free	100 ug
V3071IHC-7ML	Prediluted in 1X PBS with 0.1 mg/ml BSA (US sourced) and 0.05% sodium azide; *For IHC use only*	7 ml



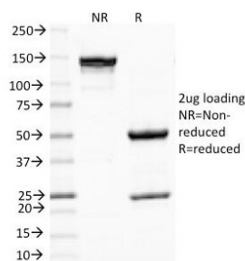
Citations (12)

[Bulk quote request](#)

Availability	1-3 business days
Species Reactivity	Human
Format	Purified
Clonality	Monoclonal (mouse origin)
Isotype	Mouse IgG1, kappa
Clone Name	PNL2
Purity	Protein G affinity chromatography
UniProt	Not Known
Localization	Cytoplasmic
Applications	Immunofluorescence : 0.5-1ug/ml Immunohistochemistry (FFPE) : 0.5-1ug/ml for 30 min at RT
Limitations	This Melanoma antibody PNL2 is available for research use only.



IHC anlylsis of formalin-fixed, paraffin-embedded human melanoma stained with Melanoma antibody (clone PNL2).



SDS-PAGE Analysis of Purified, BSA-Free Melanoma Antibody (clone PNL2).
Confirmation of Integrity and Purity of the Antibody.

Description

Anti-PNL2 is a novel melanoma marker monoclonal antibody, which has recently been introduced as an immunohistochemical reagent to stain melanocytes and tumors derived therefrom. The antigen recognized by PNL2 is different from Melan A and gp100. Its epitope is not destroyed by digestion with neuraminidase i.e. its epitope is not glycosylated. Anti-PNL2 may be most useful because of its high sensitivity for metastatic melanoma (87%), as opposed to 76% for anti-HMB45 and 82% for anti-MART-1. Anti-PNL2 labels intra-epidermal nevi while the dermal component of compound nevi are largely non-reactive with anti-PNL2. Antibodies against PNL2, MART-1 (Melan A) and HMB45 stain most clear cell sarcoma cells and a few cells in angiomyolipomas and lymphangioleiomyomatosis. Anti-PNL2 is a useful antibody for the identification of melanomas and clear cell sarcomas. Differential diagnosis is aided by the results from a panel of antibodies, including antibodies against HMB45, MART-1, tyrosinase, and MiTF.

Application Notes

Optimal dilution of the Melanoma antibody PNL2 should be determined by the researcher.

1. Staining of formalin-fixed tissues requires boiling tissue sections in 10mM Citrate buffer, pH 6.0, for 10-20 min followed by cooling at RT for 20 min.
2. The prediluted format is supplied in a dropper bottle and is optimized for use in IHC. After epitope retrieval step (if required), drip mAb solution onto the tissue section and incubate at RT for 30 min.

Immunogen

Melanocyte antigen was used as the immunogen for the Melanoma antibody PNL2.

Storage

Store the Melanoma antibody PNL2 at 2-8°C (with azide) or aliquot and store at -20°C or colder (without azide).