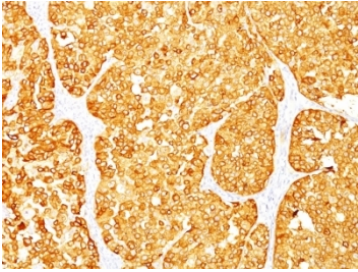


## Melan-A Antibody Cocktail [clone M2-7C10 + M2-9E3] (V3156)

Catalog No.	Formulation	Size
V3156-100UG	0.2 mg/ml in 1X PBS with 0.1 mg/ml BSA (US sourced) and 0.05% sodium azide	100 ug
V3156-20UG	0.2 mg/ml in 1X PBS with 0.1 mg/ml BSA (US sourced) and 0.05% sodium azide	20 ug
V3156SAF-100UG	1 mg/ml in 1X PBS; BSA free, sodium azide free	100 ug
V3156IHC-7ML	Prediluted in 1X PBS with 0.1 mg/ml BSA (US sourced) and 0.05% sodium azide; *For IHC use only*	7 ml

[Bulk quote request](#)

<b>Availability</b>	1-3 business days
<b>Species Reactivity</b>	Human, Mouse, Rat
<b>Format</b>	Purified
<b>Host</b>	Mouse
<b>Clonality</b>	Monoclonal (mouse origin)
<b>Isotype</b>	Mouse IgG2b
<b>Clone Name</b>	M2-7C10 + M2-9E3
<b>Purity</b>	Protein G affinity chromatography
<b>UniProt</b>	Q16655
<b>Localization</b>	Cytoplasmic
<b>Applications</b>	Flow Cytometry : 1-2ug/10 <sup>6</sup> cells Immunofluorescence : 1-2ug/ml Western Blot : 1-2ug/ml Immunohistochemistry (FFPE) : 1-2ug/ml /ml for 30 min at RT
<b>Limitations</b>	This Melan-A Antibody Cocktail is available for research use only.



Melan-A Antibody Cocktail Immunohistochemistry. IHC: Formalin-fixed, paraffin-embedded human melanoma stained with MART-1 / Melan-A antibody (M2-7C10 + M2-9E3).

## Description

Melan-A Antibody Cocktail recognizes a protein doublet of 20-22kDa, identified as MART-1 (Melanoma Antigen Recognized by T cells 1) or Melan-A. MART-1 is a newly identified melanocyte differentiation antigen recognized by autologous cytotoxic T lymphocytes. Seven other melanoma associated antigens recognized by autologous cytotoxic T cells include MAGE-1, MAGE-3, tyrosinase, gp100, gp75, BAGE-1, and GAGE-1. Subcellular fractionation shows that MART-1 is present in melanosomes and endoplasmic reticulum. This mAb labels melanomas and other tumors showing melanocytic differentiation. It is also a useful positive-marker for angiomyolipomas. It does not stain tumor cells of epithelial, lymphoid, glial, or mesenchymal origin.

Explore our [Melan-A Antibody / Melanocyte Lineage Marker clone A103 page](#) for additional validation data and research applications involving melanoma biology, melanocytic tumor identification, and pigment cell differentiation pathways.

## Application Notes

The optimal dilution of the Melan-A Antibody Cocktail for each application should be determined by the researcher.

1. Staining of formalin-fixed tissues is enhanced by boiling tissue sections in pH 9 10mM Tris with 1mM EDTA for 10-20 min followed by cooling at RT for 20 minutes.
2. The prediluted format is supplied in a dropper bottle and is optimized for use in IHC. After epitope retrieval step (if required), drip mAb solution onto the tissue section and incubate at RT for 30 min.

## Immunogen

Recombinant human protein was used as the immunogens for this Melan-A antibody cocktail.

## Storage

Store the Melan-A antibody cocktail at 2-8oC (with azide) or aliquot and store at -20oC or colder (without azide).