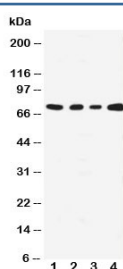


## MEKK3 Antibody (R31024)

Catalog No.	Formulation	Size
R31024	0.5mg/ml if reconstituted with 0.2ml sterile DI water	100 ug

**Bulk quote request**

<b>Availability</b>	1-3 business days
<b>Species Reactivity</b>	Human
<b>Format</b>	Antigen affinity purified
<b>Clonality</b>	Polyclonal (rabbit origin)
<b>Isotype</b>	Rabbit IgG
<b>Purity</b>	Antigen affinity
<b>Buffer</b>	Lyophilized from 1X PBS with 2.5% BSA and 0.025% sodium azide/thimerosal
<b>UniProt</b>	Q99759
<b>Applications</b>	Western Blot : 0.5-1ug/ml
<b>Limitations</b>	This MEKK3 antibody is available for research use only.



Western blot testing with MEKK3 antibody; Lane 1: HeLa; 2: A431; 3: MCF-7; 4: Jurkat cell lysate. Expected size ~71KD

## Description

MAP3K3 (Mitogen-activated protein kinase kinase kinase 3), also known as MAP/ERK kinase kinase 3 (Mekk3), or MAPKKK3, is an enzyme that in humans is encoded by the MAP3K3 gene. MAP3K3 is contiguously distal to LYK5 on chromosome 17 (Puffenberger et al., 2007). By yeast 2-hybrid analysis of a mouse T-cell cDNA library, Uhlik et al. (2003) showed that a C-terminal fragment of mouse Osm (CCM2) interacted with MAP3K3/Mekk3, which activates p38 in response to sorbitol-induced hyperosmotic conditions. Mekk3 and Osm colocalized in the cytoplasmic compartment of cotransfected cells, and the Mekk3-Osm complex was recruited to Rac1 and cytoskeletal actin-containing membrane ruffles in response to sorbitol treatment. Protein interaction assays showed that Osm interacted directly with the Mekk3 substrate Mkk3 (MAP2K3), with actin, and with both GDP- and GTP-loaded Rac1. Uhlik et al. (2003) concluded that the

RAC1-OSM-MEKK3-MKK3 complex is required for regulation of p38 activity in response to osmotic shock.

## Application Notes

The stated application concentrations are suggested starting amounts. Titration of the MEKK3 antibody may be required due to differences in protocols and secondary/substrate sensitivity.

## Immunogen

An amino acid sequence from the N-terminus of human MAP3K3 (MNDLVALQMNRHRM) was used as the immunogen for this MEKK3 antibody.

## Storage

After reconstitution, the MEKK3 antibody can be stored for up to one month at 4°C. For long-term, aliquot and store at -20°C. Avoid repeated freezing and thawing.